

Thank you for choosing High Lifter!

MCFFA-RNG-2-1

Max Clearance Polaris Ranger 570 Midsize Forward Arched A-arm Multi Application

Lift Kits • Tires • Suspension • Snorkels

HIGHLIFTER

Axles • Clutch Kits • Portals • Rad Kits

Contact Us

Mon-Fri 8am - 5pm CST

highlifter.com

sales@highlifter.com

800-699-0947





Shreveport, LA (318)-524-2270

Read before Installation

This product is designed for use on ATVs and/or RUVs to increase ground clearance and fender clearance. Purchasers should be aware that use of this product may increase the frequency of required maintenance, part wear, and will raise the center of gravity on your ATV and/or RUV, increasing risk of roll-over, injury and death on all types of terrain. It is your responsibility to always inform other operators and passengers of this vehicle about the added risks.

High Lifter Products, products are designed to best fit users ATV/RUV under stock conditions. Adding, modifying, or fabricating any OEM or aftermarket parts will void warranty. High Lifter Products, products could interfere with other aftermarket accessories. If the user has aftermarket products on machine, contact High Lifter Products to verify that they will work together. Adding aftermarket suspension components and/or more aggressive tires can cause breakage of other OEM driveline components such as differentials, axles or drive shafts.

We recommend that wider tires and/or wheel spacers be used to achieve a wider stance and to improve stability of the ATV and/or RUV. Riders should be advised that the handling characteristics of a taller ATV and/or RUV are different and require extra care when riding, particularly on side hills or off-camber situations. If you further raise the center of gravity by adding taller tires, heavy loads to racks or seats, or by any other means, the ATV and/or RUV must be operated with even more care, at slower speeds and on relatively flat ground. All turns should be done at a slow speed, even on level ground.

Operation of an ATV and/or RUV with or without modified suspension components, while or shortly after consuming alcohol or drugs, subjects the rider to the risk of serious bodily harm or possible death. This risk is compounded if the rider does not wear an approved helmet and other safety gear. High Lifter urges that all approved safety gear be worn when riding an ATV and/or RUV as a driver or passenger.

By purchasing and installing High Lifter Products, products, user agrees that should damages occur, High Lifter Products will not be held responsible for loss of time, use, labor fees, replacement parts, or freight charges. High Lifter Products will not be held responsible for any direct, indirect, incidental, special, or consequential damages that result from any product purchased from High Lifter Products. The total liability of seller to user for all damages, losses, and causes of action, shall not exceed the total purchase price paid for the product that gives rise to the claim.

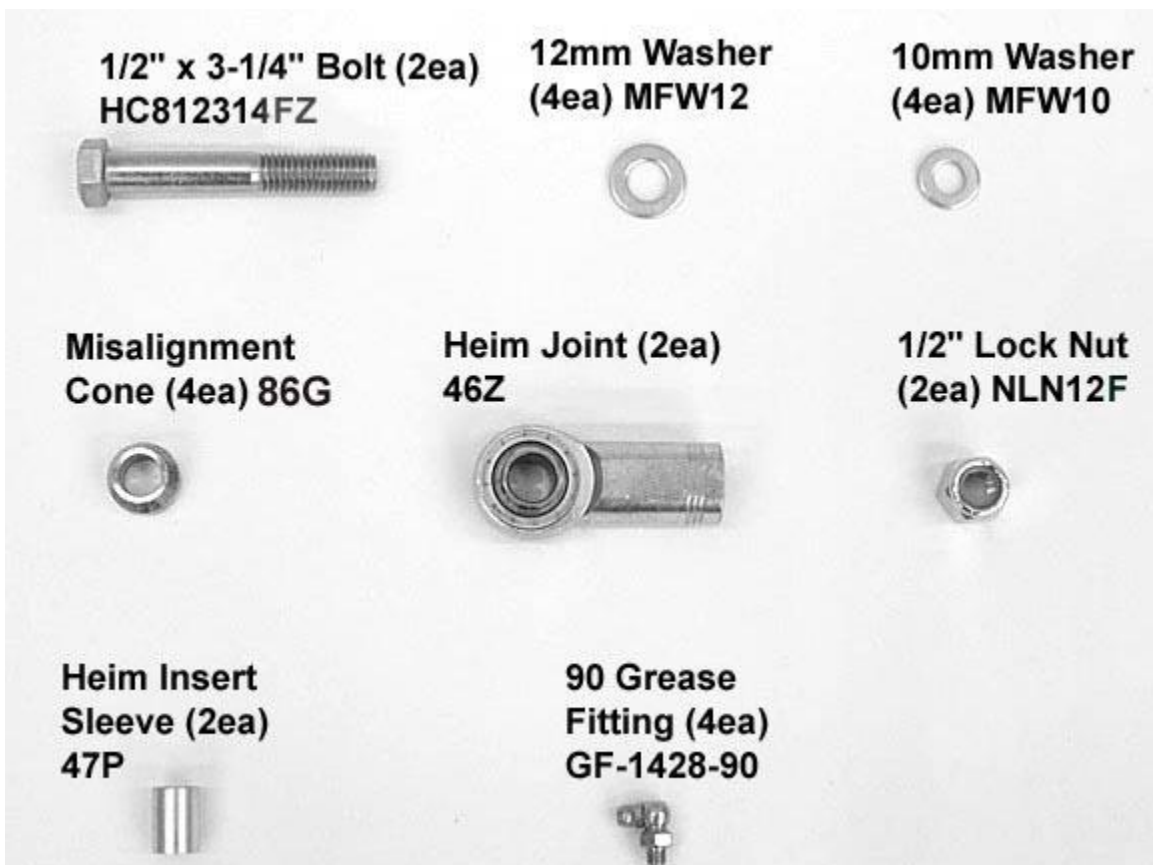
If this product is not what you expected, or is not consistent with your intended use, you should return the product immediately to the seller, before installation, for a refund of the purchase price; less any fees. After installation, product is warranted for 90 days for defects in workmanship and materials. High Lifter Products will warranty only parts provided by High Lifter Products. Any damage or problems with OEM housings, bearings, seals, or other manufacturer's products will not be covered by High Lifter Products. Parts and products will not be warranted if item was not installed properly, misused, or modified.

Dealers and other Installers

You are responsible for informing your customer and end user of the information contained above and the increased potential hazards of operating an ATV and/or RUV equipped with modified suspension components. If you install any suspension modifying components, it is your responsibility to also install the warning label prominently in view of the driver and in prominent view of the driver and passenger on RUVs and multi-passenger ATVs. They should also be instructed to notify anyone operating the vehicle, as well as any passengers, that said vehicle is modified.

As discussed above, it is critically important that they be instructed in the need for slower speed operation, regardless of terrain, after this lift kit is installed.

Parts Diagram



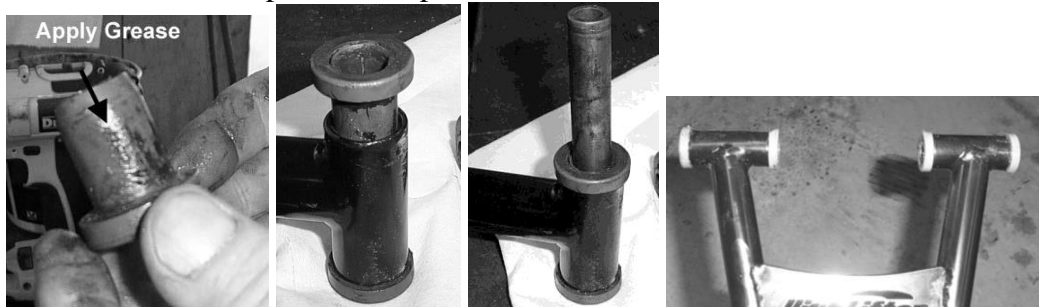
Installation Instructions:

1. Place jack under center of UTV front end and lift until front wheels clear the ground. Be careful to support UTV properly so that it is securely supported but so that A-arms and shocks can droop to full extension.
2. Remove front wheels.
3. Disconnect the hub assembly from the lower stock A-arm.

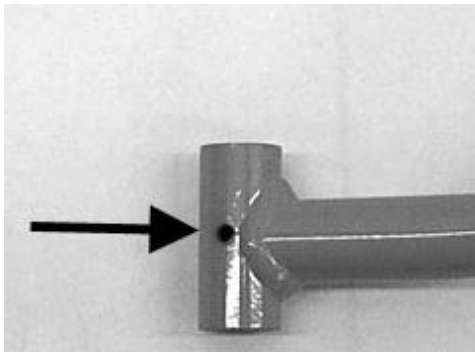


4. Remove the lower stock A-arm from the UTV.
5. Next, remove the stock bushings and inner sleeves from the stock lower A-arms. These will be reused in the new High Lifter Forward A-arm Kit.
Note: At this time inspect bushings for wear and replace as needed.

6. Place some grease on the stock bushings and insert them into the new A-arms. You may need to use a rubber hammer to tap them into place.



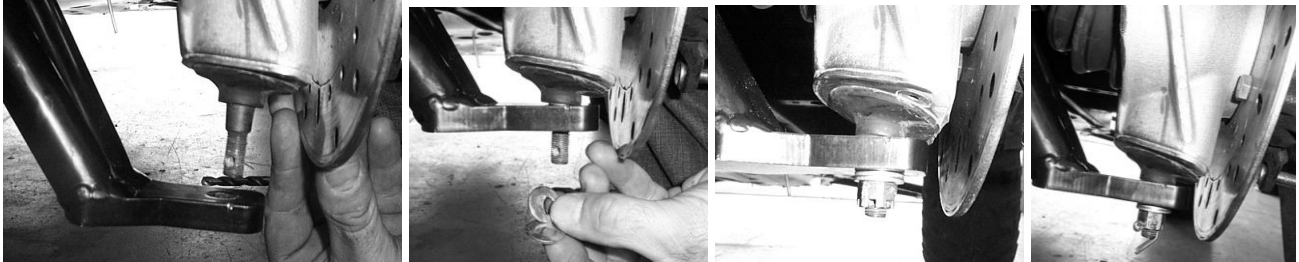
7. Install the grease fitting into the new arms before installation. **DO NOT OVER TORQUE THE FITTINGS.** Make sure to fill with factory approved grease.



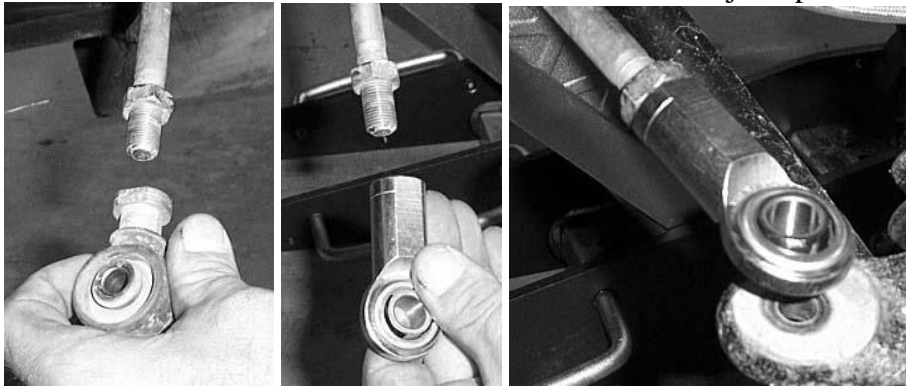
8. Install the new A-arms on to the ATV using the stock nuts and bolts.
Note: Torque all bolts to factory specifications.



9. Reattach the hub assembly to the lower A-arm then place two 10mm flat washers on the end of the strut.
Fasten it together with the factory castle nut and cotter pin.
Note: Torque bolts to factory specifications.



10. Remove the stock tie rod end and connect the new heim joint provided.



11. Insert the sleeve into the heim joint.



12. To connect the new heim joint to the knuckle assembly you will need to use a ½” drill bit and drill a larger hole where the tie rod connects to the knuckle.



13. Once you have drilled the hole, use the ½ x 3 ¼” hex bolt and the two high alignment bushings and connect the heim joint to the knuckle.

14. Insert the new ½ x 3 ¼” hex bolt. Slide the bolt through the alignment bushing, then the heim joint and then through another alignment bushing. Insert the bolt through the knuckle assembly.



15. Place the 12mm washer and ½” lock nut on the bolt and torque tight.



16. Place wheels back onto UTV and lower jack.

