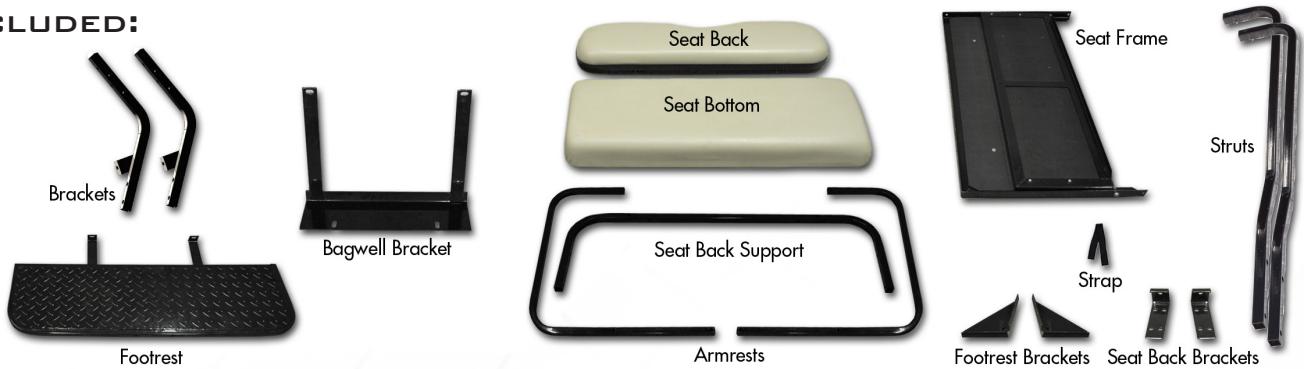




Rear Flip Seat Kit & Frame Only Kit Installation Instructions for Yamaha G-Series®

INCLUDED:



Engage the Parking Brake and switch the Key to the OFF position.

Take off canopy by removing upper strut hardware that secures canopy to front and rear struts. Retain hardware, you will need it later.



Remove lower strut bolts and remove rear struts. If installing a seat on a Yamaha G-22, retain rear struts for later use.



3

Remove OEM front seat backs. Retain hardware.



4

Temporarily remove motor cover.



5

Remove OEM front seat supports. Retain hardware.



6

Insert **Main Brackets** into holes where OEM front seat supports were removed. Be sure the tabs are pointed to the cart's **CENTER**, as shown. Secure the **Main Brackets** with hardware retained in step 6.

Reattach motor cover.





Tool Required: 5/16" Drill Bit

Remove bagwell bolts. Then using a 5/16" drill bit, drill through the vehicle frame where the hardware was removed.



14mm Socket & 13mm Wrench

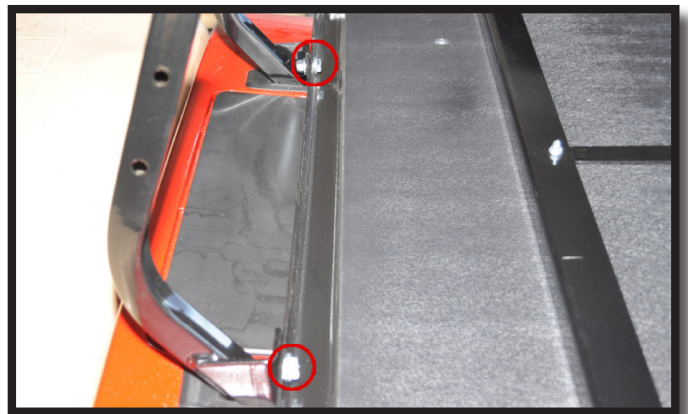
Attach **Bagwell Bracket** using 8x70mm bolts from pack 1.



17mm Socket & Wrench

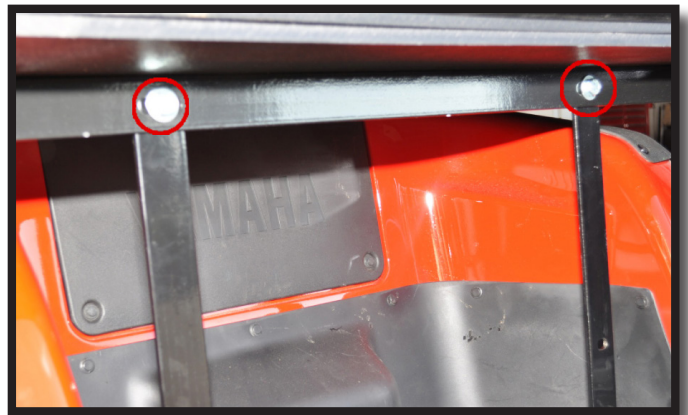
Place **Seat Frame** on cart, attach frame to **Main Brackets** using 10x25mm bolts from pack 1.

Note: Do NOT fully tighten hardware until after STEP 18 is complete.



17mm Socket & Wrench

Attach **Seat Frame** to **Bagwell Bracket** uprights using 10x25mm bolts from pack 1. Ensure the crossframe under the Seat Frame lies in front of the Bagwell Bracket as shown.





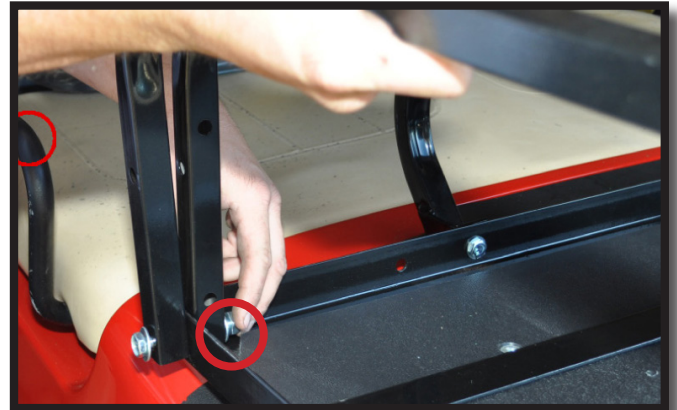
17mm Socket & Wrench

Attach **Footrest** to **Bagwell Bracket** using remaining 10x25mm bolts from pack 1.



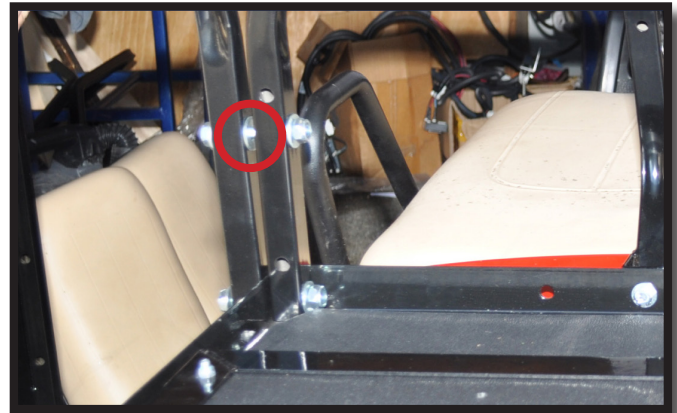
17mm Socket & Wrench

Attach **Seat Back Support Bar** and **Armrests** to **Seat Frame** using 10x70mm bolts from pack 2.



17mm Socket & Wrench

Install the supplied Rubber Spacer at the top bolt between the **Armrest** and **Seat Support Bar** as shown. Secure using 10x70mm bolts from pack 2.



#3 Phillips Tip & 17mm Wrench

Attach **Armrests** to front of **Seat Frame** using 10mm Countersunk bolts and Acorn nuts from pack 2.



Note: *Acorn nut goes on the outside of the frame.*



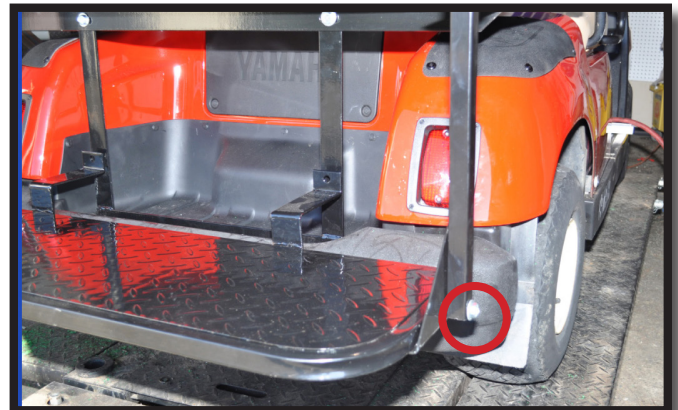
15

Reinstall front seat backs using hardware retained in step 3.



17mm Socket & Wrench

Attach bottom of **Armrests** to **Footrest** using remaining 10x70mm bolts from pack 2.



10mm Socket or Wrench

Attach **Seat Back Brackets** to **Rear Seat Back** using 6mm hardware from pack 3. Tighten hardware.



17mm Socket & Wrench

Attach **Rear Seat Back with brackets** to the **Seat Back Support Bar** using the 10x45mm bolts from pack 3.





#3 Phillips Tip

1. Place HD bracket on flip seat as shown. Align bracket holes to the flip seat mounting holes. Insert Nylon seat strap between HD bracket and flip frame at desired location.

2. Make sure the thickest part of the seat bottom is towards the rear. Center seat bottom from left to right on flip frame. Press cushion firmly against HD bracket and seat frame. Using countersunk bolts from Pack 4, tighten the seat bottom to seat frame as shown.

*Cover bolt holes using supplied Plastic Caps from Pack 4.



For G-22 models reattach factory struts and canopy using hardware retained in step 1.

For older G-Series models, use the supplied **Rear Struts** with this kit. Attach the Struts to the Seat Back Support Bar using the 10x70mm bolts from pack 5.

Note: You can now fully tighten all hardware.



HARDWARE PACK

Pack 1

- 6 - 10x25mm Hex Bolt
- 12 - 10x20mm Flat Washer
- 6 - 10mm Nylock Nut
- 2 - 8 x 70mm Hex Bolt
- 2 - 8mm Flat Washer
- 2 - 8mm Nylock Nut

Pack 2

- 6 - 10x70mm Hex Bolt
- 2 - 10x45mm Countersunk Bolt
- 14 - 10x20mm Flat Washer
- 6 - 10mm Nylock Nut
- 2 - Rubber spacer
- 2 - 10mm Acorn Nut

Pack 3

- 2 - 10x45mm Hex Nut
- 4 - 10x20mm Flat Washer
- 2 - 10mm Nylock Nut
- 4 - 6x20mm Hex Bolt
- 4 - 6mm Lock Washer
- 4 - 6x17mm Flat Washer

Pack 4

- 8 - 8x30mm Countersunk Bolt
- 1 - Nylon Strap
- 8 - Plastic Caps

Pack 5

- 4 - 10x70mm Hex Bolt
- 8 - 10x20mm Flat Washer
- 4 - 10mm Nylock Nut

INSTALLATION COMPLETE