

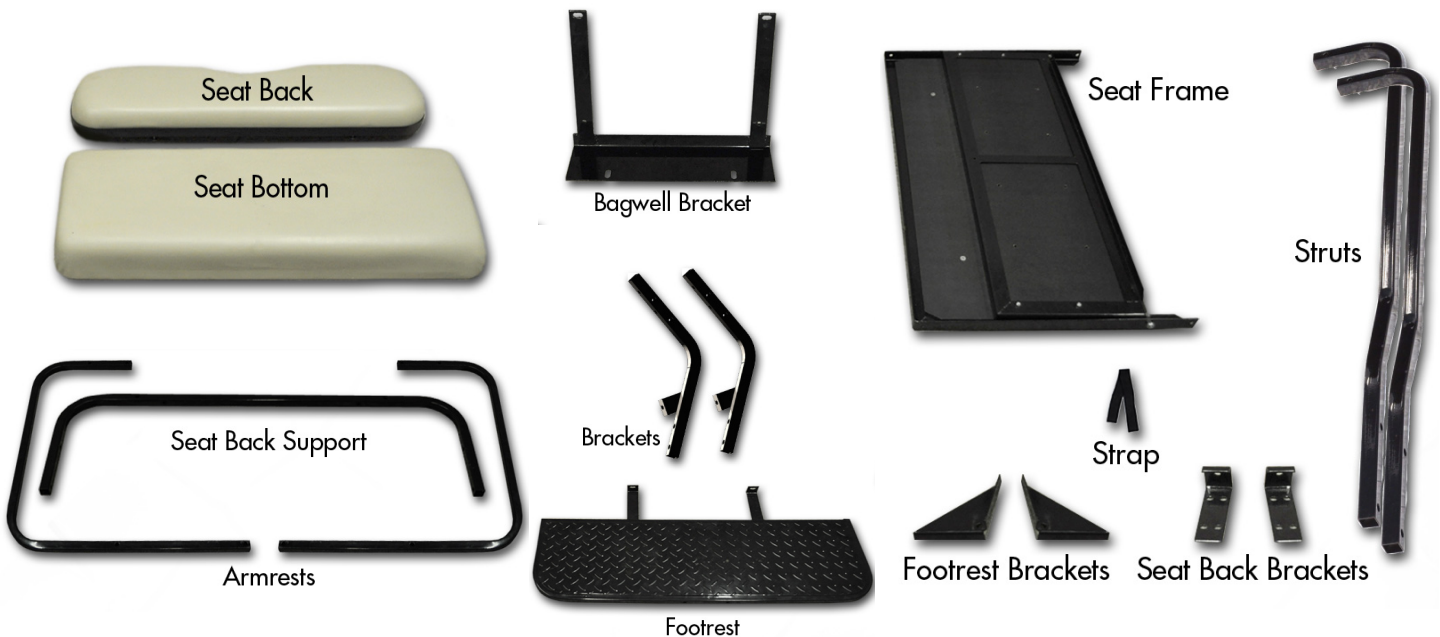


BUGGIES UNLIMITED



Rear Flip Seat Kit Installation Instructions for Yamaha G-Series

INCLUDED:



Engage Parking Brake and switch the Key Switch to the OFF Position.

Take off canopy by removing upper strut hardware that secures canopy to front and rear struts. Retain hardware, you will need it later.

STEP 1



Remove lower strut bolts and remove rear struts. If installing a seat on a Yamaha G-22, retain rear struts for later use.

STEP 2



Remove OEM front seat backs. Retain hardware.

STEP 3



Remove motor cover.

STEP 4



Remove OEM front seat supports. Retain hardware.

STEP 5



Insert **Main Brackets** into holes where OEM front seat supports were removed. Be sure the tabs are pointed to the cart's **CENTER**, as shown. Secure the **Main Brackets** with hardware retained in step 6.

**Reattach Motor Cover*

STEP 6



Tool Required: 5/16" Drill Bit

Remove bagwell bolts. Then using a 5/16" bit, drill through the vehicle frame where the hardware was removed.

STEP 7



14mm Socket & 13mm Wrench

Attach **Bagwell Bracket** to cart using 8x70mm bolts from pack 1.

STEP 8



17mm Socket & Wrench

Place **Seat Frame** on cart and attach to **Main Brackets** using 10x25mm bolts from pack 1.

STEP 9



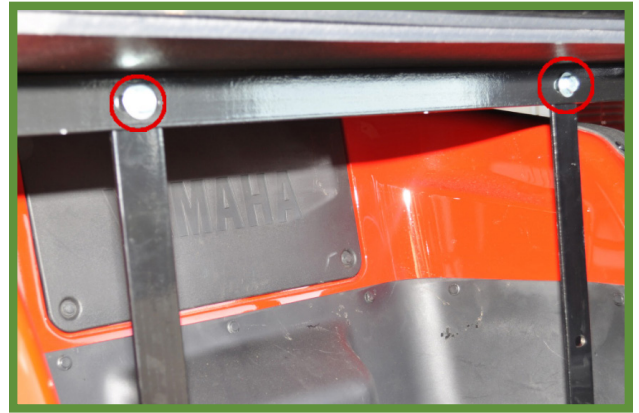
Note: Do NOT fully tighten hardware until after STEP 18 is complete.



17mm Socket & Wrench

Attach **Seat Frame** to **Bagwell Bracket** using 10x25mm bolts from pack 1. Ensure that the bottom of the seat frame lies in front of the bagwell bracket as shown.

STEP 10



17mm Socket & Wrench

Attach **Footrest** to the **Bagwell Bracket** using remaining 10x25mm bolts from pack 1.

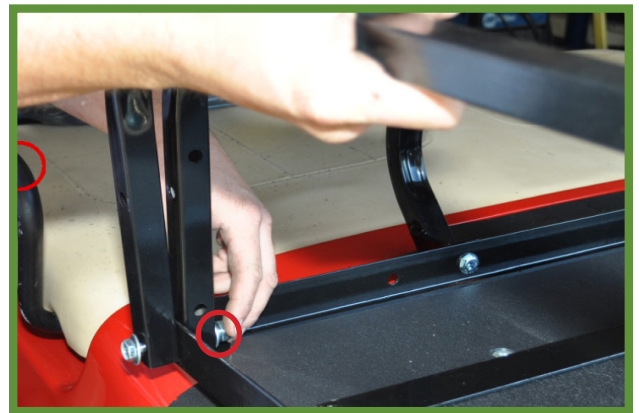
STEP 11



17mm Socket & Wrench

Attach **Seat Back Support Bar** and **Armrests** to **Seat Frame** using 10x70mm bolts from pack 2.

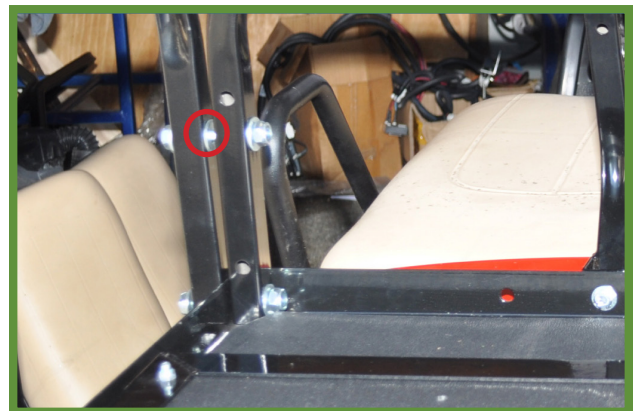
STEP 12



17mm Socket & Wrench

Use **Rubber Spacers** from Pack 2 between **Seat Back Support** and **Armrests** when installing upper 10x70mm bolts as shown.

STEP 13





#3 Phillips Tip & 17mm Wrench

Attach **Armrests** to **Seat Frame** using 10mm Countersunk bolts and Acorn nuts from pack 2.

Note: Acorn nut goes on the outside of the frame.

STEP 14



Reinstall front seat backs using hardware retained in step 3.

STEP 15



17mm Socket & Wrench

Attach bottom of **Armrests** to **Footrest** using remaining hardware from pack 2.

STEP 16



10mm Socket or Wrench

Attach **Seat Back Brackets** to **Rear Seat Cushion** using 6mm hardware from pack 3. Tighten hardware.

STEP 17





17mm Socket & Wrench

Attach **Rear Seat Back** with brackets to the **Seat Back Support Bar** using the 10x45mm bolts from pack 3.

STEP 18



#3 Phillips Tip

Attach **Rear Seat Bottom** and strap to Flip Seat Frame using 8mm countersunk bolts from pack 4.

STEP 19



For G-22 models, reattach factory struts and canopy using hardware retained in step 1.

For older G-Series models, use the supplied **Rear Struts** with this kit. Attach the Struts to the Seat Back Support Bar using the 10x70mm bolts from pack 5.

STEP 20



Note: You can now fully tighten all hardware.

HARDWARE PACK

Pack 1

- 6 - 10x25mm Hex Bolt
- 12 - 10x20mm Flat Washer
- 6 - 10mm Nylock Nut
- 2 - 8 x 70mm Hex Bolt
- 2 - 8mm Flat Washer
- 2 - 8mm Nylock Nut

Pack 2

- 6 - 10x70mm Hex Bolt
- 2 - 10x45mm Countersunk Bolt
- 14 - 10x20mm Flat Washer
- 6 - 10mm Nylock Nut
- 2 - Rubber spacer
- 2 - 10mm Acorn Nut

Pack 3

- 2 - 10x45mm Hex Bolt
- 4 - 10x20mm Flat Washer
- 2 - 10mm Nylock Nut
- 4 - 6x20mm Hex Bolt
- 4 - 6mm Lock Washer
- 4 - 6x17mm Flat Washer

Pack 4

- 8 - 8x30mm Countersunk Bolt
- 1 - Nylon Strap

Pack 5

- 4 - 10x70mm Hex Bolt
- 8 - 10x20mm Flat Washer
- 4 - 10mm Nylock Nut

INSTALLATION COMPLETE