

POLARIS RANGER 1000XP REAR SOFT DOORS

SEIZMIK[®]

HIGHLIFTER

SEIZMIK[™]

FALCON RIDGE

SNORKEL YOUR ATV

SYSTEM 3[™]
OFF-ROAD
Traction. Strength. Style.

EPI[™]
PERFORMANCE

 service@seizmik.com

 1-866-838-3366
between 9:00 AM and 5:00 PM EST.



www.seizmik.com/customer-support

Parts Available For These Popular Brands and Others

POLARIS

can-am



HONDA

Kawasaki

 **YAMAHA**

PRODUCT INFORMATION

Installation Information:

This product may require modifications to your vehicle. Please familiarize yourself with all the steps before beginning assembly.

Compatibility Info:

This door set is designed to work with other Seizmik branded Accessories for the Polaris Ranger 1000 as well as OEM Polaris hard tops. Please note Seizmik cannot guarantee fitment with other branded aftermarket products. Please research installation details on our products and others when trying to combine different branded accessories.

If you have any questions, comments, need assistance, or are missing parts, please visit our website at www.seizmik.com/customer-support or email us at service@seizmik.com

Visit www.seizmik.com for more information on our product or call 1-866-838-3366 between 9:00AM and 5:00PM EST.

TOOLS NEEDED:

- RUBBER MALLET
- 12 MM SOCKET
- 14 MM SOCKET
- ADJUSTABLE WRENCH
- PHILLIPS HEAD SCREW DRIVER
- TORQUE BIT WRENCH



WARNING: This product is designed to protect from the elements of weather and is not designed for passenger retention purposes. Vehicle passengers should not lean on or against the doors. All passengers should wear seat belts while the vehicles is in use. Passengers leaning on or against the doors or failure of passengers to wear seat belts could result in serious bodily injury or death, especially when the vehicle is in operation.

PARTS

ITEM #52-06025

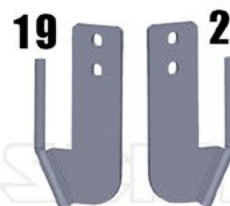
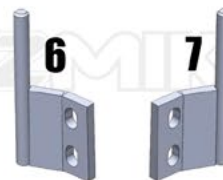
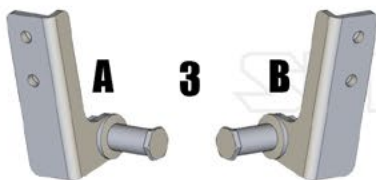
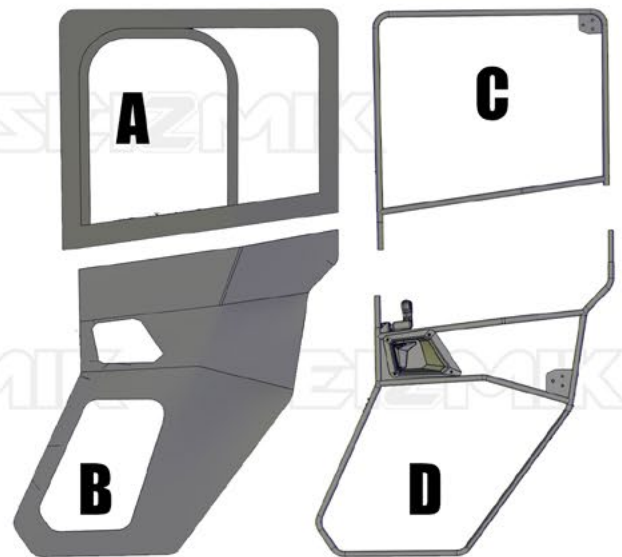
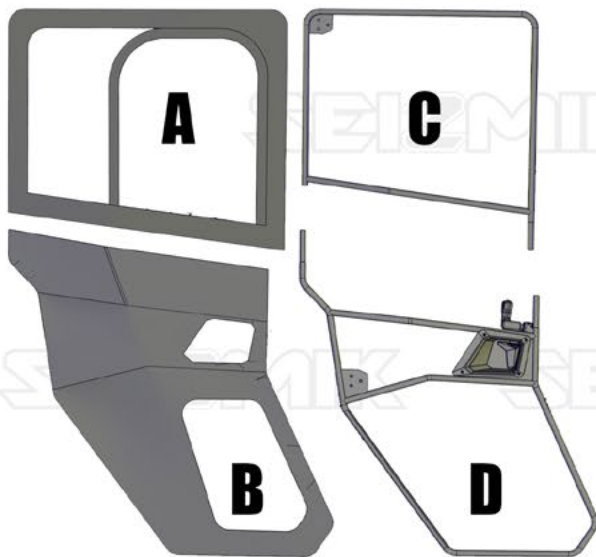


- | | | |
|---|------------|----------|
| 1. PASSENGER SIDE UPPER AND LOWER DOOR | QTY | 1 |
| A) UPPER TEXTILE | | |
| B) LOWER TEXTILE | | |
| C) UPPER FRAME | | |
| D) LOWER FRAME | | |
| 2. DRIVER SIDE LOWER AND UPPER DOOR | QTY | 1 |
| A) UPPER TEXTILE | | |
| B) LOWER TEXTILE | | |
| C) UPPER FRAME | | |
| D) LOWER FRAME | | |
| 3. STRIKER BOLT ASSEMBLY | QTY | 2 |
| A) DRIVER SIDE | | |
| B) PASSENGER SIDE | | |
| 4. UPPER HINGE PLATE | QTY | 2 |
| 5. BACKING PLATE | QTY | 2 |
| 6. LEFT UPPER HINGE MOUNT | QTY | 1 |
| 7. RIGHT UPPER HINGE MOUNT | QTY | 1 |

- | | | |
|---------------------------------------|------------|-----------|
| 8. M8X25 FLANGE BOLT | QTY | 16 |
| 9. M8X20 FLANGE BOLT | QTY | 16 |
| 10. M8 FLANGE NUT | QTY | 16 |
| 11. LEFT LOWER HINGE PLATE | QTY | 1 |
| 12. RIGHT LOWER HINGE PLATE | QTY | 1 |
| 13. LEFT LOWER HINGE MOUNT | QTY | 1 |
| 14. RIGHT LOWER HINGE MOUNT | QTY | 1 |
| 15. STRAIGHT GASKET | QTY | 2 |
| 16. DOOR GASKET | QTY | 2 |
| 17. M6X25 BUTTON HEAD BOLT | QTY | 4 |
| 18. M6 LOCK NUT | QTY | 4 |
| 19. FRONT DOOR LOWER PASSENGER | QTY | 1 |
| 20. FRONT DOOR LOWER DRIVER | QTY | 1 |
| 21. FRONT DOOR UPPER PASSENGER | QTY | 1 |
| 22. FRONT DOOR UPPER DRIVER | QTY | 1 |

1

2



FRONT DOOR INSTALLATION INFO

52-06025 - Ranger Crew Rear Doors

If you already have a set of Seizmik Front Doors (52-06024), you will need to use brackets 19-22 in this kit for the front doors installation on the Ranger Crew machines.

52-06026 - Ranger Crew Front and Rear Doors

You should receive 2 boxes with your shipment:

1. 52-06024 Ranger Front Doors
2. 52-06025 Ranger Crew Rear Doors

***Attention - you will need to use items 19-22 in the 52-06025 box for installing the 52-06024 Ranger Front Doors. Items 6,7,13,14 in the 52-06024 Ranger Front Door box will not be used with the 4 door model.**

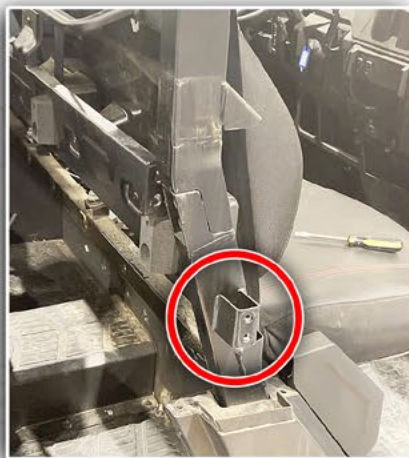


IF YOUR MACHINE HAS NEVER HAD DOORS INSTALLED ON IT YOU WILL NEED TO REMOVE THE PIECE HIGHLIGHTED IN RED AND TRIM OUT A HOLE USING THE TEMPLATE PROVIDED IN THIS KIT.

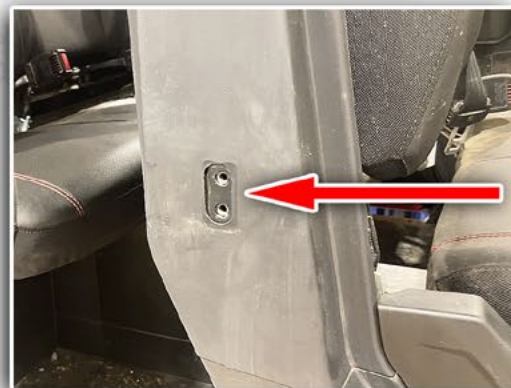
IF YOU CAN SEE THE THREADED HOLES IN THIS PIECE, SKIP THIS STEP.

YOU WILL NEED A TORQUE BIT WRENCH AND A FLAT HEAD SCREW DRIVER TO REMOVE THE BOLTS AND RIVETS ALONG THE OUTSIDE AND INSIDE OF THE PLASTIC.

KEEP ALL RIVETS AND BOLTS TO USE FOR REINSTALLING THE PLASTICS.



ONCE THE PLASTIC IS REMOVED YOU CAN LOCATE THE BRACKET AND MARK THE PLASTIC WHERE TO TRIM.



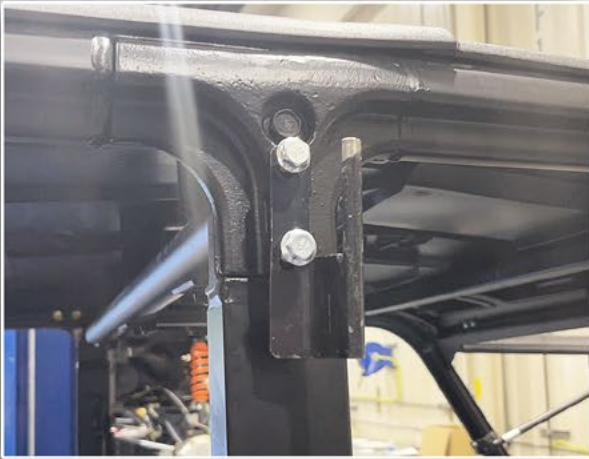
THIS IS WHAT THE PLASTIC COVER SHOULD LOOK LIKE AFTER BEING TRIMMED AND REINSTALLED TO THE MACHINE. ITS OKAY IF YOUR TRIM IS A LITTLE LARGER THEN SHOWN AS THE METAL BRACKET WILL COVER THIS AREA.

FRONT DOOR INSTALLATION INFO



ATTACH THE FRONT UPPER PASSENGER HINGE BACKING PLATE ONTO THE UPPER WELDED BRACKET ON THE ROLL CAGE .

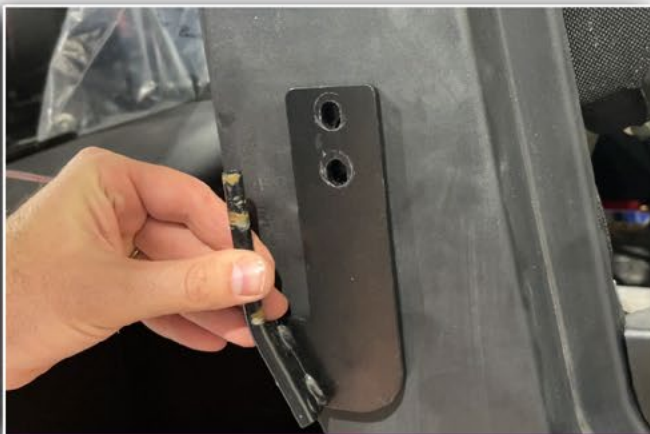
ENSURE THE HINGE IS FACING TOWARD THE FRONT OF THE VEHICLE. INSTALL USING TWO M8X20 FLANGE BOLTS.



ONCE THE FRONT BRACKET ARE INSTALLED REFER TO THE 52-06024 INSTRUCTIONS FOR ASSEMBLING THE FRONT DOORS.

ATTACH THE FRONT LOWER PASSENGER HINGE BACKING PLATE ONTO THE BRACKET YOU PREVIOUSLY TRIMMED A HOLE FOR. ENSURE THE HINGE IS FACING THE REAR OF THE VEHICLE.

INSTALL USING TWO M8X20 FLANGE BOLTS.



THANK YOU FOR CHOOSING

SEIZMIK

THESE INSTRUCTIONS ARE FOR THE RIGHT PASSENGER SIDE. ONCE COMPLETED REPEAT ALL STEPS ON OPPOSITE SIDE.

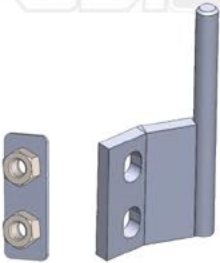
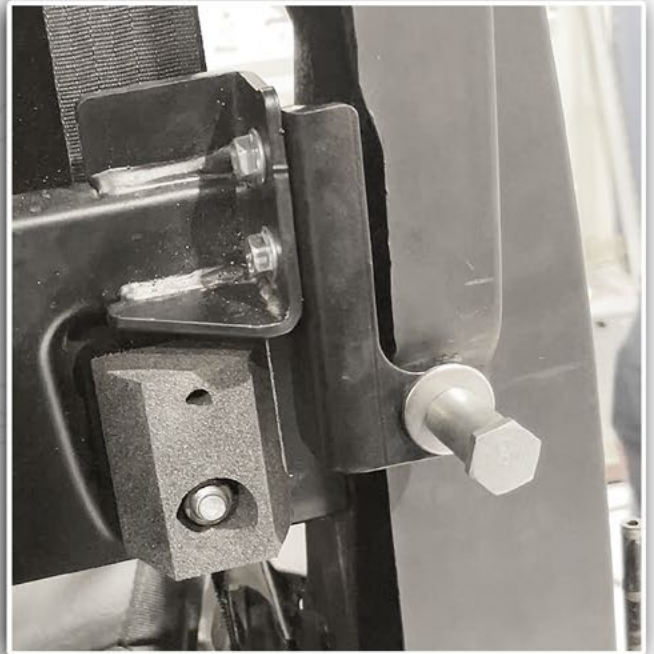
STEP 1 HINGE BRACKET AND STRIKER BOLT INSTALLATION



LOCATE THE TWO THREADED HOLES LOCATED DIRECTLY BEHIND THE FRONT PASSENGER SEAT AND INSTALL THE STRIKER BOLT USING TWO M8X20 FLANGE BOLTS. DO NOT FULLY TIGHTEN THESE YET AS YOU WILL NEED TO ADJUST THIS LATER.

IN SOME CASES YOU MAY NEED TO TRIM BACK THE PLASTIC IF YOU HAVE ANY AFTER MARKET APPLICATIONS INSTALLED. **PICTURED BELOW IS A FACTORY MODEL.*

TIP: INSTALL THE TOP BOLT FIRST USING A WRENCH TO HOLD THE NUT IN PLACE.

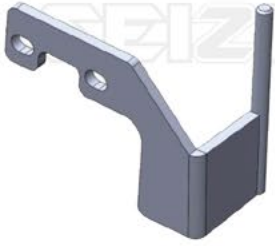


SLIDE THE UPPER HINGE BACKING PLATE INTO THE BRACKET WELDED TO THE UPPER REAR OF THE ROLL CAGE. **WELD NUTS SHOULD BE FACING THE VEHICLE.**

WHILE HOLDING THIS IN PLACE, INSTALL THE UPPER RIGHT HINGE BRACKET WITH THE BEND FACING OUT USING TWO M8X20 FLANGE HEAD BOLTS.

DO NOT FULLY TIGHTEN AT THIS TIME.





LIFT THE BED ON THE VEHICLE AND LOCATE THE TWO THREADED HOLES IN THE LOWER REAR LOCATION SHOWN IN THE LOCATION REFERENCE IMAGE. INSTALL THE LOWER LEFT HINGE BRACKET USING TWO M8X20 FLANGE HEAD BOLTS. DO NOT FULLY TIGHTEN AT THIS TIME.



STEP 2

DOOR ASSEMBLY



THIS IS THE ORIENTATION OF HOW THE DOORS WILL BE ASSEMBLED.

TIP: IT IS EASIER TO CONNECT THESE TWO ENDS FIRST.

SLIDE THE TOP DOOR FRAME ONTO THE BOTTOM DOOR FRAME. YOU WILL HAVE TO FLEX THE BOTTOM FRAME SLIGHTLY TO LINE UP THE TUBES.

BOLT IN PLACE FRONT AND REAR USING THE 6MM X 25 BUTTON HEAD BOLTS AND NUTS.

THE BOLT HEADS MUST BE ON THE OUTSIDE OF THE FRAME SO THE BOLTS DON'T RUB THROUGH THE TEXTILE.



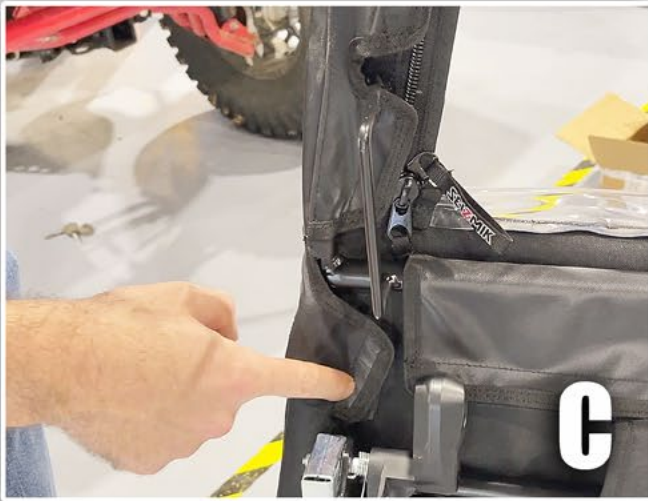
SEIZMIK

SEIZMIK

FOLD THE TOP FLAP ON THE LOWER DOOR TEXTILE OVER THE TOP TUBE, PULL TIGHT, AND FASTEN THE VELCRO.



AT THIS POINT, LOOSEN VELCRO FLAPS AS NEEDED TO PULL THE TEXTILE TIGHT AND FIT AS WELL AS YOU CAN.



KEEP RE-ADJUSTING UNTIL THE TEXTILE IS AS TAUGHT AND WRINKLE FREE AS YOU CAN MAKE IT.

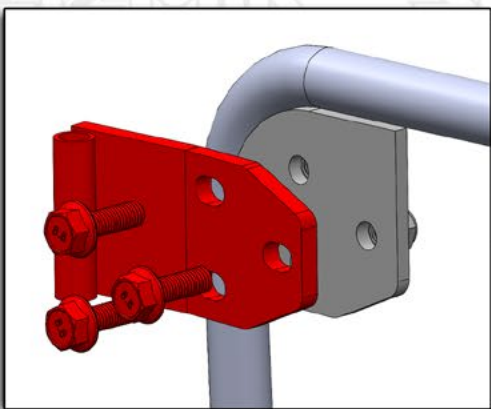


SEIZMIK

SEIZMIK

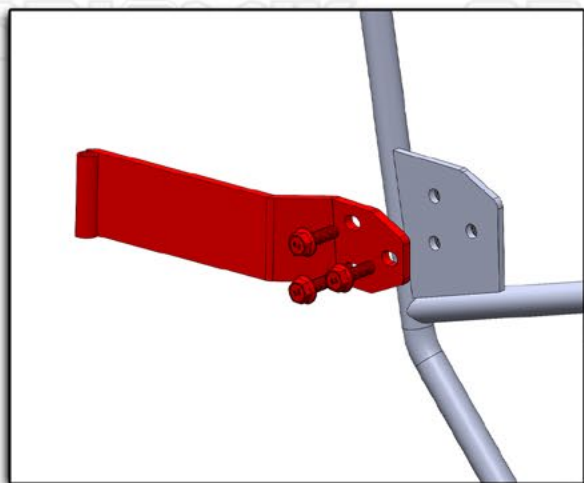
STEP 3

HINGE INSTALLATION



ONCE YOU ARE HAPPY WITH THE TEXTILE FIT, LOCATE THE HOLES FOR THE HINGES.

USING A SHARP KNIFE MAKE A SLIT IN THE TEXTILES AT ALL SIX LOCATIONS FOR THE BOLTS TO PASS THROUGH.



BOLT THE HINGES ON AS SHOWN USING THE M8X25 FLANGE HEAD BOLTS AND NUTS.

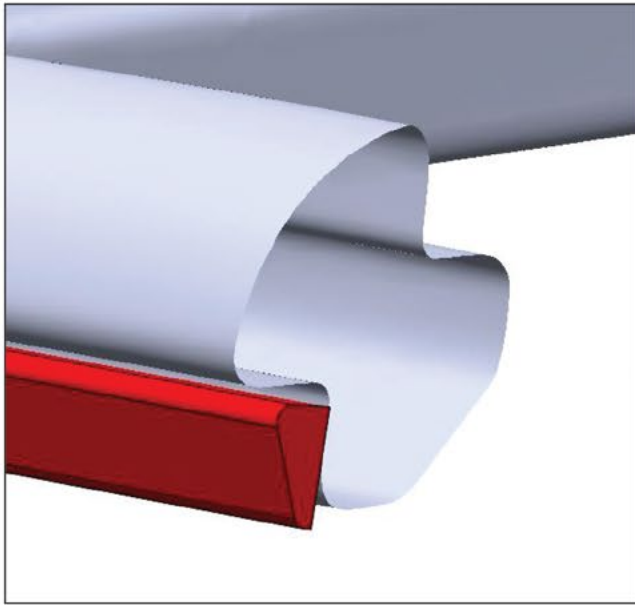
DO NOT FULLY TIGHTEN AT THIS TIME.



STEP 4

WEATHERSTRIP INSTALLATION

IMPORTANT! CLEAN THE WEATHERSTRIP MOUNTING SURFACE THOROUGHLY WITH RUBBING ALCOHOL TO ENSURE GOOD TAPE ADHESION.



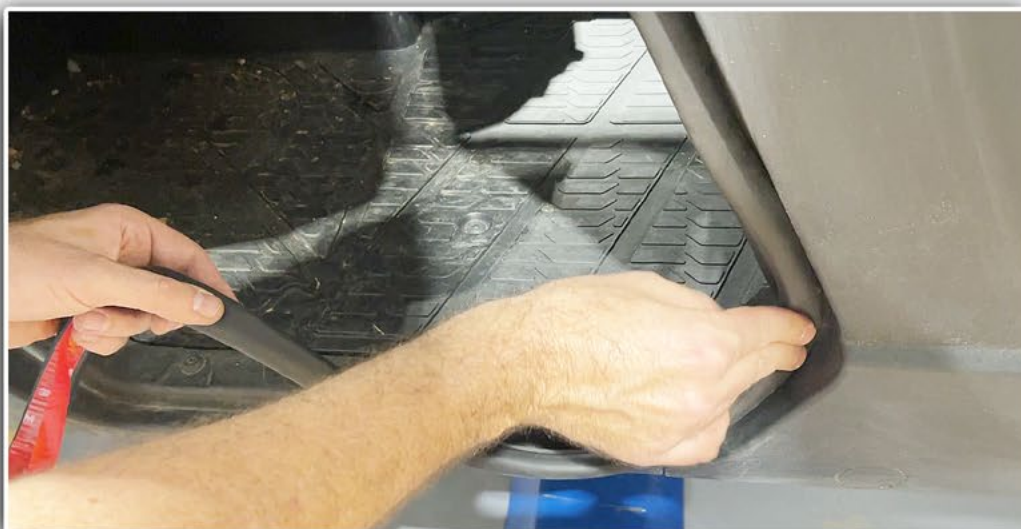
MAKE SURE GASKET IS ORIENTED AS SHOWN WITH THE LARGE PART OF THE WEATHERSTRIP FACING AWAY FROM THE DOOR.

START A FEW INCHES BELOW THE STRIKER BOLT.

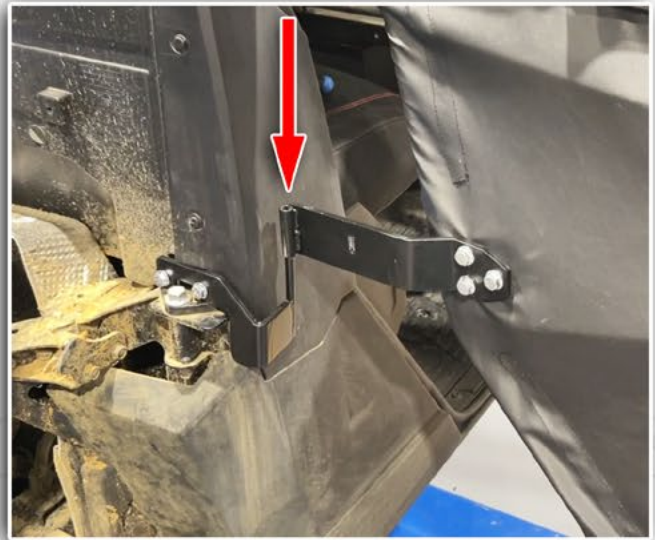


AFTER CLEANING MOUNTING SURFACE AND MAKING SURE THE GASKET IS ORIENTED CORRECTLY, PEEL BACKING FROM ADHESIVE A LITTLE AT A TIME AND GENTLY PRESS INTO PLACE EVERY FEW INCHES.

TRY NOT TO STRETCH THE GASKET AS YOU GO. GO AROUND THE ENTIRE DOOR OPENING UNTIL YOU REACH THE STARTING POINT, THEN USE A PAIR OF SCISSORS OR SHARP KNIFE TO TRIM THE END.



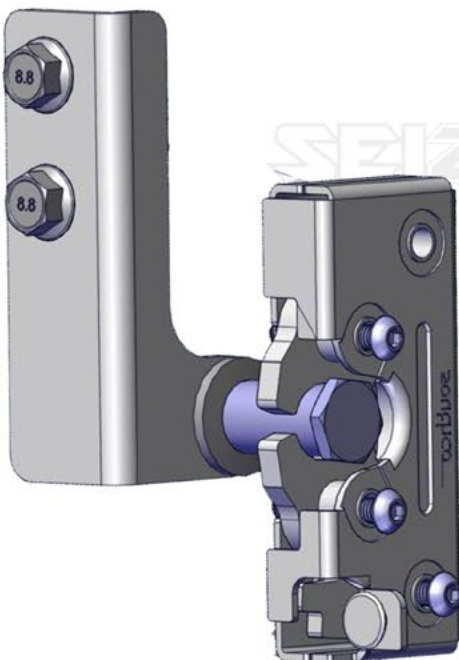
BECAUSE YOU ONLY LIGHTLY PRESSED IT DOWN EVERY FEW INCHES YOU WILL BE ABLE TO REPOSITION IT IF NEEDED. ONCE YOU ARE SATISFIED WITH THE FIT PRESS THE ADHESIVE DOWN FIRMLY ALONG ITS ENTIRE LENGTH.



MOUNT THE DOOR: SLIDE DOOR ONTO PREVIOUSLY INSTALLED HINGE MOUNTS. BECAUSE EVERYTHING IS STILL LOOSE IT MAY BE NECESSARY TO WIGGLE THE DOOR A BIT TO GET IT TO SLIDE ALL THE WAY ONTO THE HINGE PINS. CLOSE AND LATCH THE DOOR GENTLY.

ADJUST THE DOOR POSITION: MOVE THE DOOR AROUND UNTIL THE GAP IS EVEN ALL THE WAY AROUND THE DOOR.

SNUG THE STRIKER BOLT MOUNT BOLTS DOWN OR HAVE SOMEBODY HELP HOLD THE DOOR IN THIS POSITION. *DO NOT WORRY HOW TIGHTLY THE DOOR IS CLOSED AT THIS POINT. TIGHTEN ALL HINGE BOLTS.*



ADJUST HOW TIGHTLY THE DOOR CLOSES: PULL THE OUTSIDE HANDLE AND THE DOOR SHOULD RELEASE AND OPEN. LOOSEN THE STRIKER BOLT MOUNT BOLTS AND PULL THE MOUNT AS FAR OUT AS IT WILL GO.

SNUG THE BOLTS BACK DOWN. THE ROTARY LATCH IN THE DOOR MECHANISM HAS TWO POSITIONS AS IT CLOSES OVER THE STRIKER BOLT. GENTLY CLOSE THE DOOR AND PUSH IT UNTIL YOU HEAR IT CLICK TWICE. NOW LOOSEN THE STRIKER BOLT MOUNTING PLATE BOLTS AND PUSH THE DOOR UNTIL IT FULLY COMPRESSES THE GASKET.

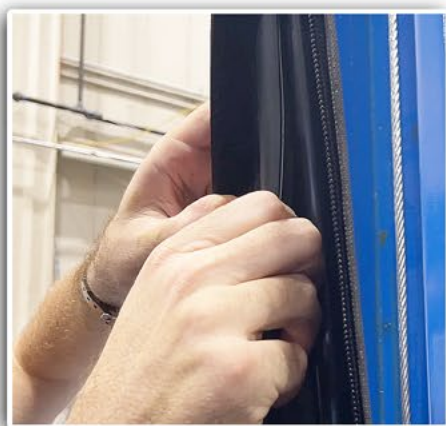
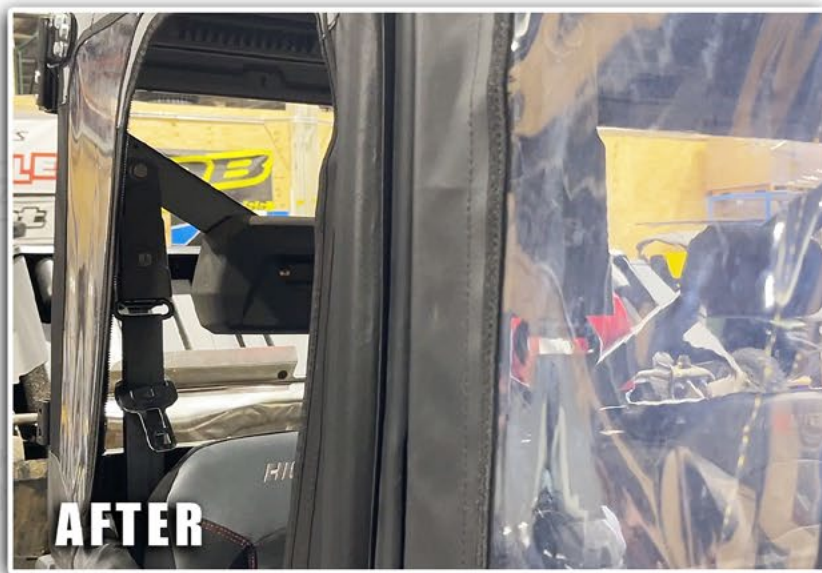
TIGHTEN THE STRIKER BOLT MOUNTING PLATE BOLTS AGAIN WHILE HOLDING THE DOOR IN THIS POSITION. OPEN THE DOOR AND SHUT IT AGAIN TO VERIFY THAT YOU CAN CLOSE THE DOOR WITHOUT HAVING TO SLAM IT HARD AND THAT THE LATCH HAS CLICKED TWICE AND CLOSED COMPLETELY.

STEP 6

DOOR ADJUSTMENT

ONCE THE DOOR IS FULLY DOWN ON THE BOTTOM HINGE, CLOSE THE DOOR SHUT. IF A GAP APPEARS USE THE 18" GASKET THAT'S PROVIDED AND ADHERE IT TO THE UPPER TUBE FRAME UNDER THE TEXTILE TO FILL THE GAP.

ONCE YOU ARE HAPPY WITH THE FITMENT OF THE DOOR REMEMBER TO GO BACK AND TIGHTEN ALL THE BOLTS.



RUN A LENGTH OF GASKET ON THE INSIDE OF THE DOOR FRAME FACING THE AREA WITH THE GAP.



THANK YOU FOR CHOOSING
SEIZMIK