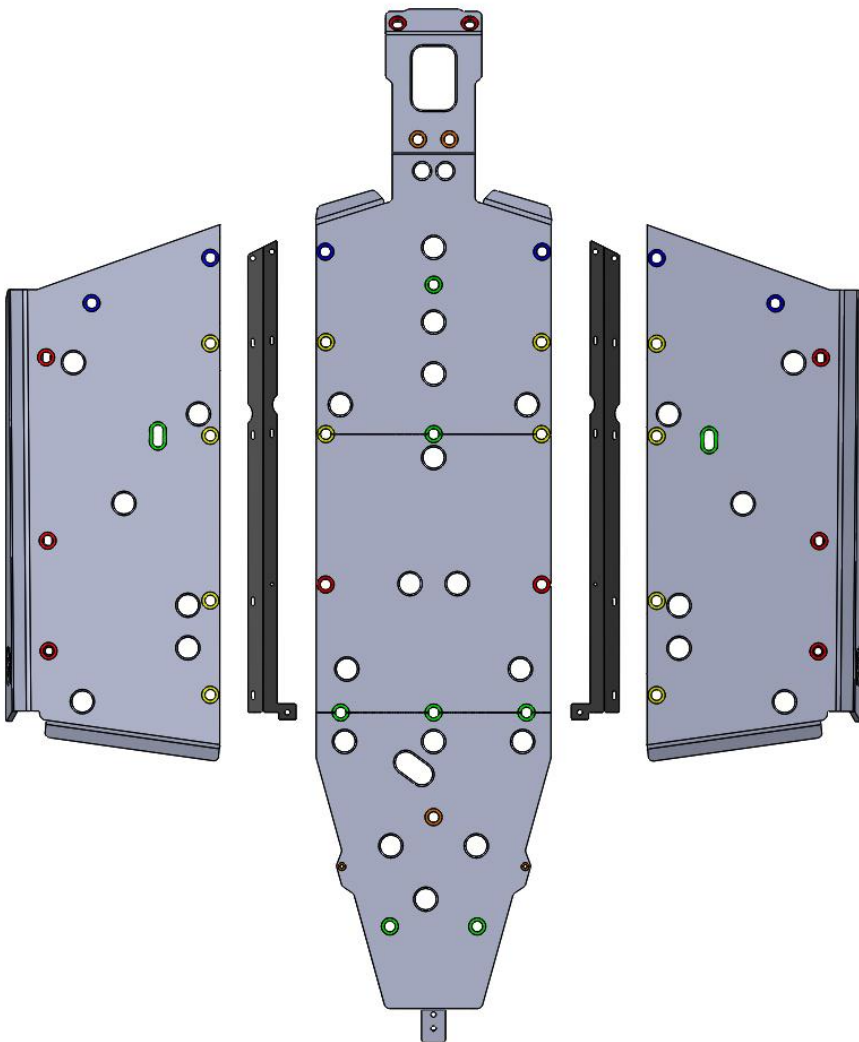
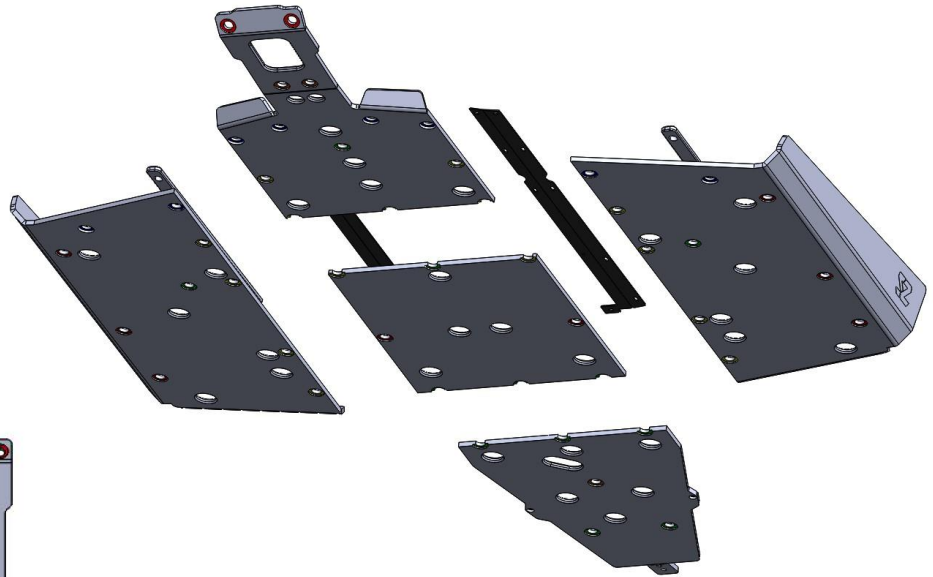


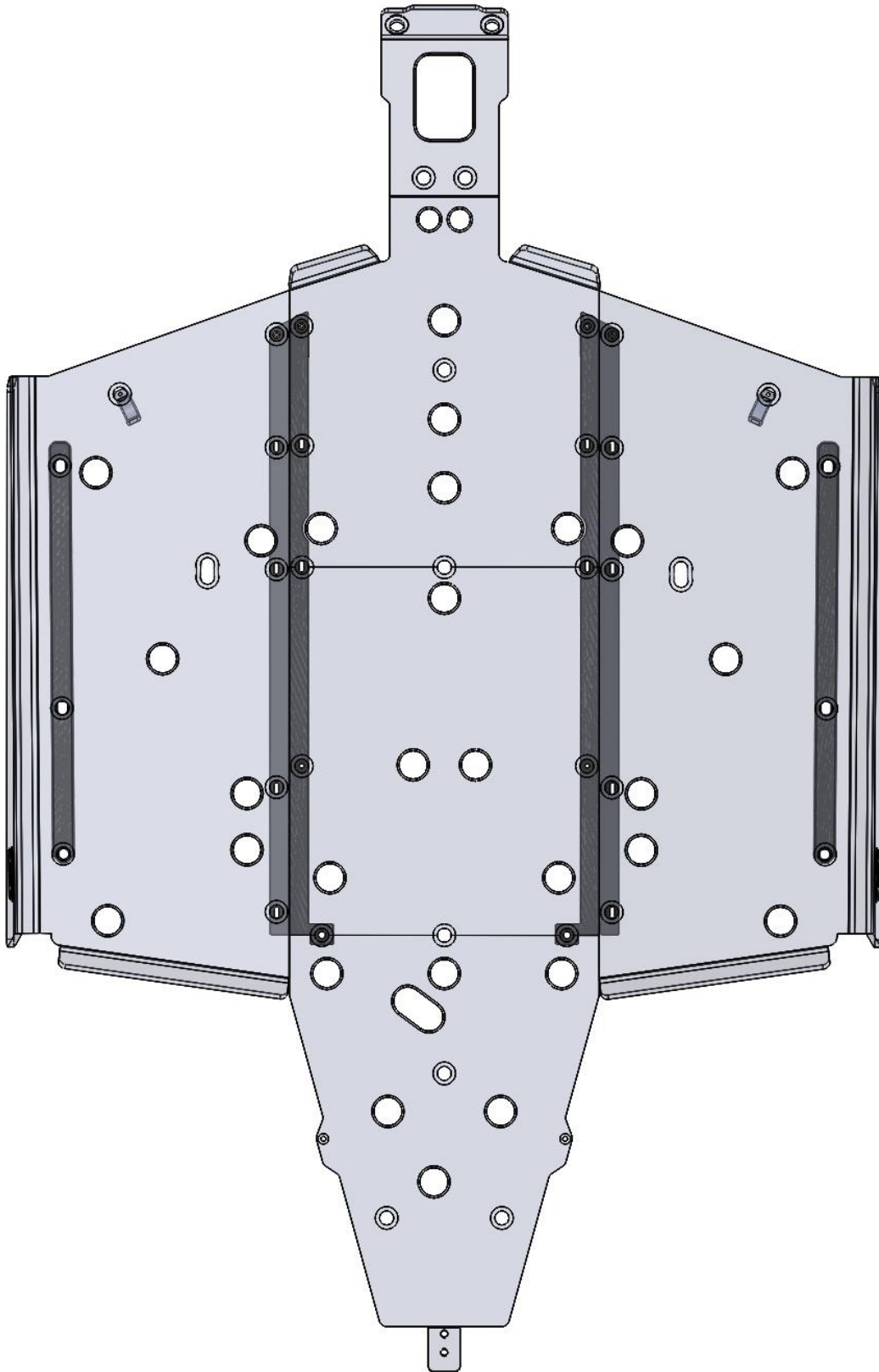
**GENERAL XP 1000 2 Seat Seizmik
Skid Plate Manual
Part # 76-10164**



Always observe the warnings and precautions in this manual when using your Seizmik products. For best results, carefully follow the instructions in this manual and make no modifications.

If you have any questions, comments, need assistance, or are missing parts, please call 1-866-838-3366 between 9:00AM and 5:00PM EST. You can email us at support@seizmik.com

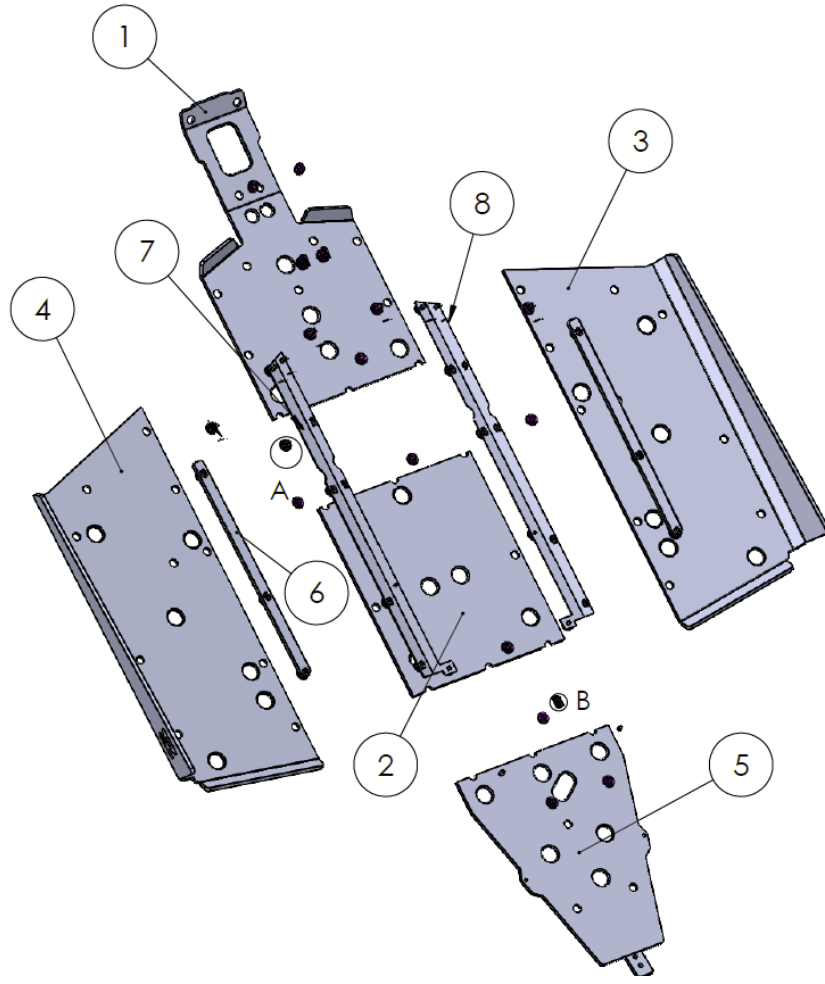
View looking up at the underside of the vehicle

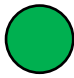


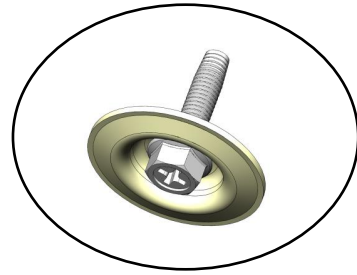
Parts List




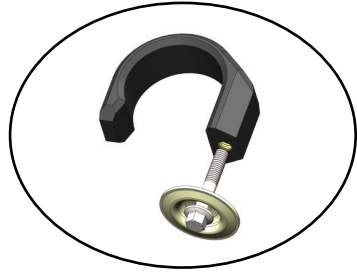
ITEM NO.	Description	Part Number	QTY.
1	SP_SK03_P1_04 Front Panel	76-10199	1
2	SP_SK03_P2_01 Middle Panel	76-10200	1
3	SP_SK03_P3_06 Pass Side Panel	76-10201	1
4	SP_SK03_P4_06 Drive Side Panel	76-10202	1
5	SP_SK03_P5_02 Rear Panel	76-10203	1
6	SP_SK03_P6_01 Side Spacer	76-10204	2
7	SP_SK03_B1_03 Driv Side Bracket	76-10205	1
8	SP_SK03_B2_03 Pass Side Bracket	76-10206	1
9	Skid Plate Washer	54-96007	42
10	Skid Plate Insert Washer	54-96008	3
11	Tapered Hex screw, M6 x 1.0 x 25mm	54-96017	24
12	Hex flange screw, M6 x 1.0 x 35mm	99-10006	6
13	Hex flange screw, M6 x 1.0 x 20mm	99-10007	2
14	M6 Locknut	99-10003	2
15	Self Tapping Screw m6.3x38mm	54-96015	10
16	M6 Clip Nut	54-96009	12
17	1.75" Wrap Around Clamp	54-96003	6

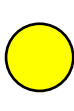


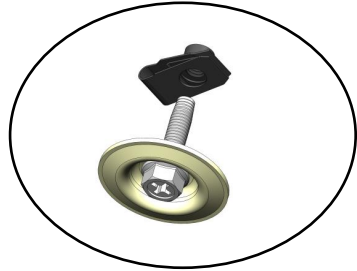
 GREEN holes use M6x25mm tapered bolt and washer into factory threaded holes unless called out otherwise.




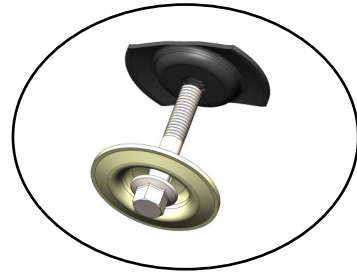
 BLUE holes use wrap around clamps.

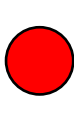


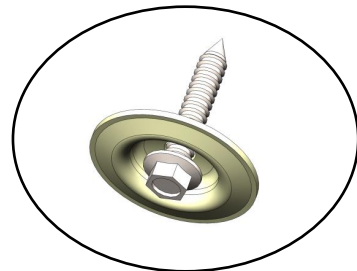
 YELLOW holes use M6x25mm tapered bolt and washer into clip nuts attached to metal brackets unless called out otherwise.

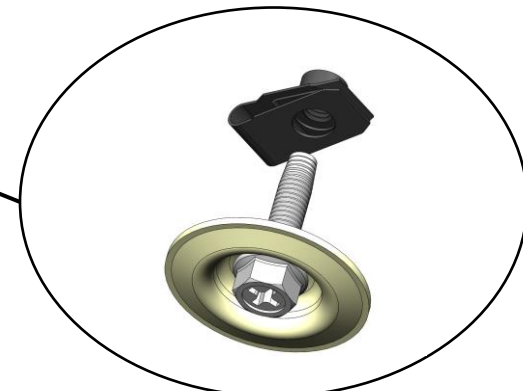
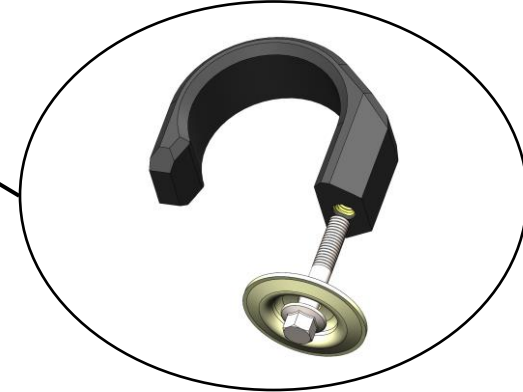
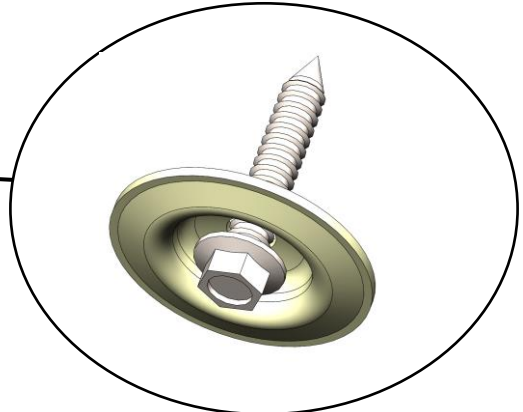
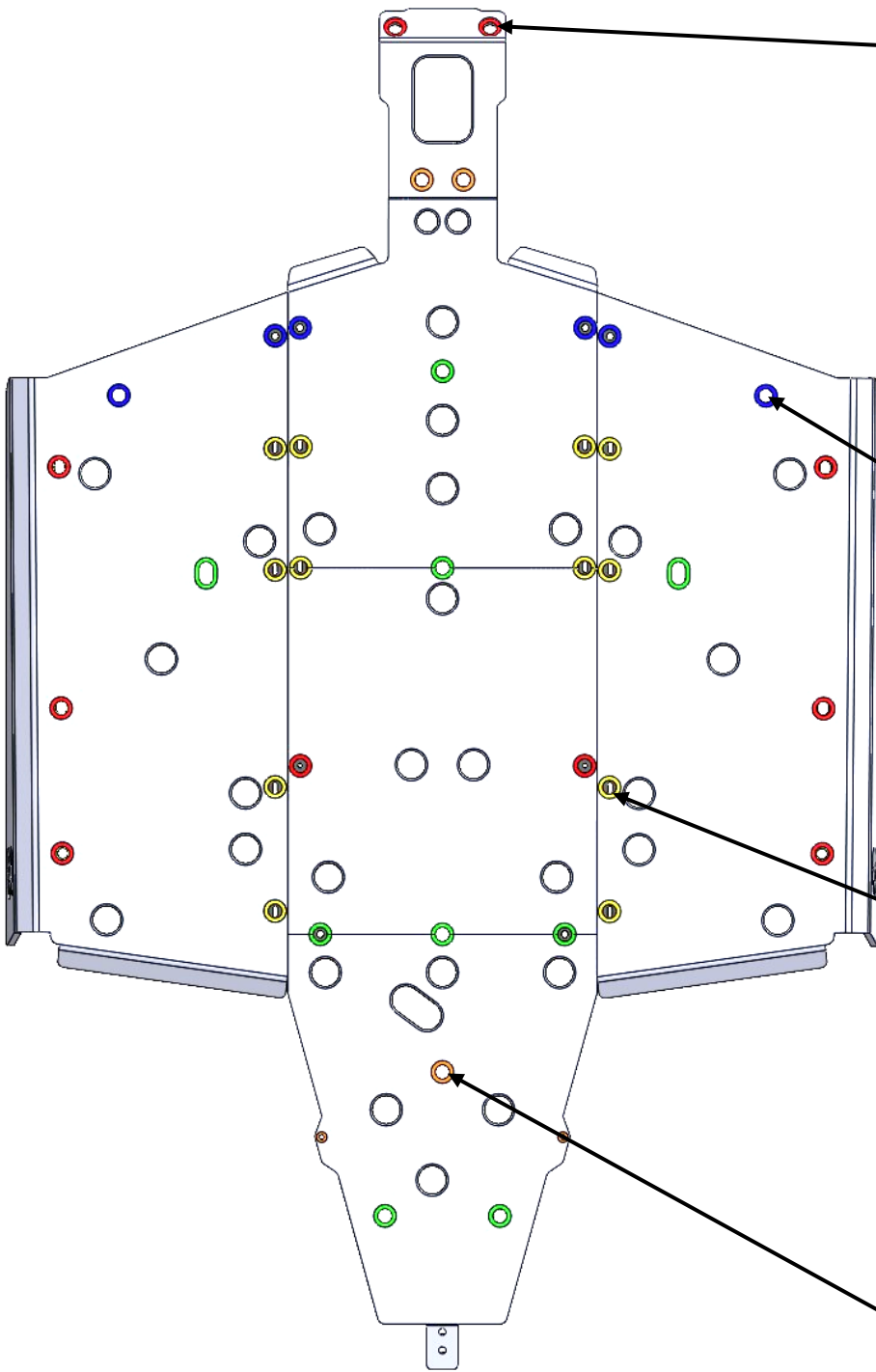







 ORANGE holes use a bolt and an insert washer placed into factory hole in sheet metal unless called out otherwise.

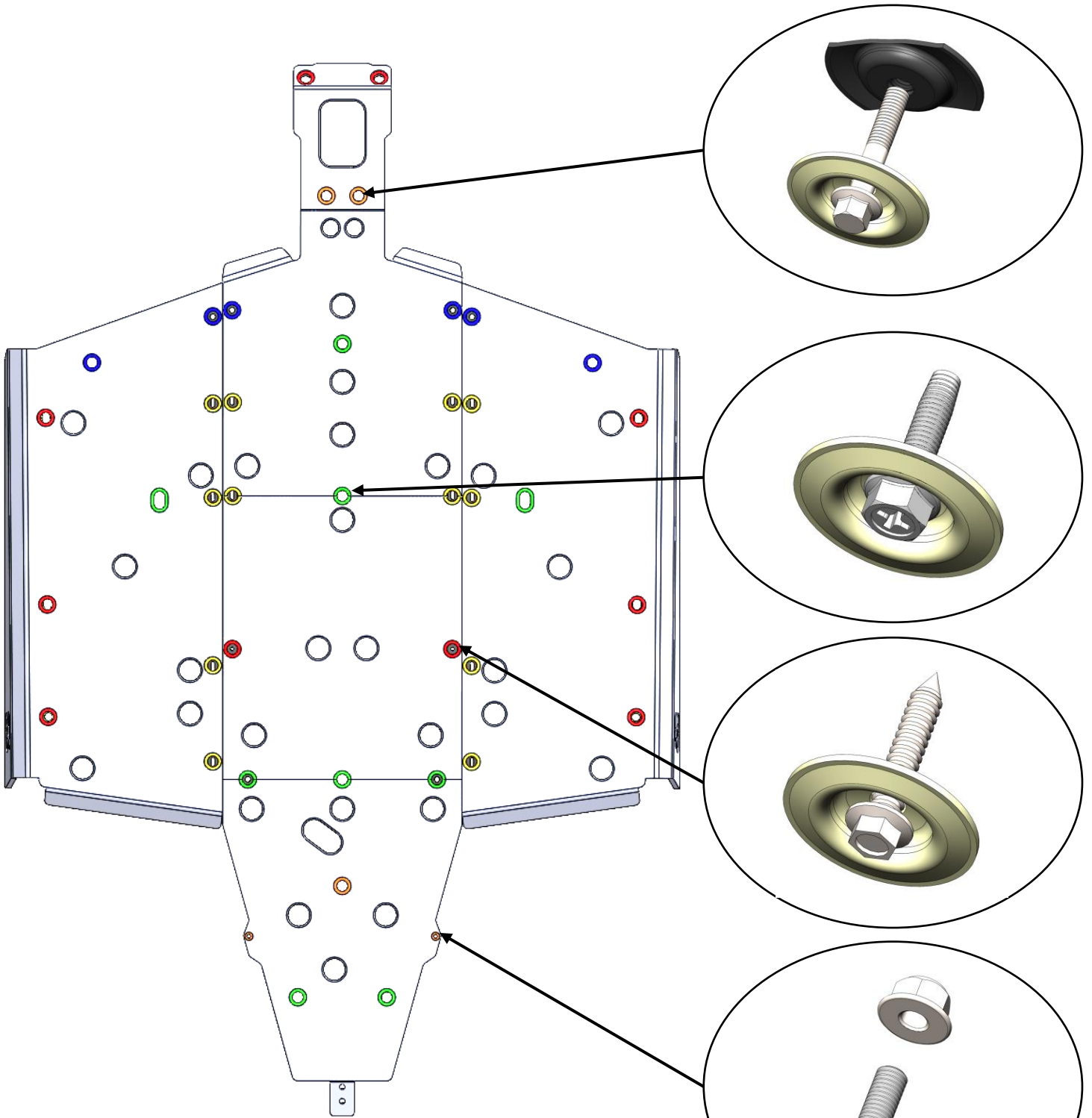







 RED holes use Self Tapping Screws- Some locations may or may not require pre drilling of 1/8" pilot hole. (pre drilling is recommended)

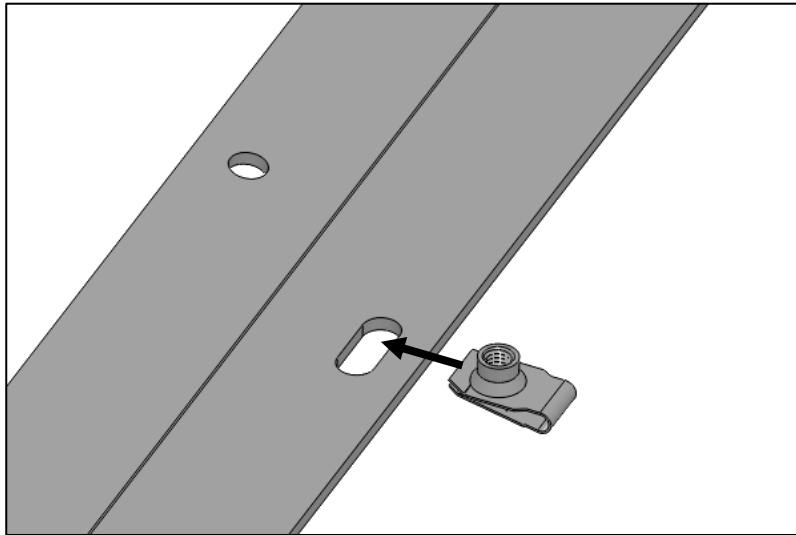




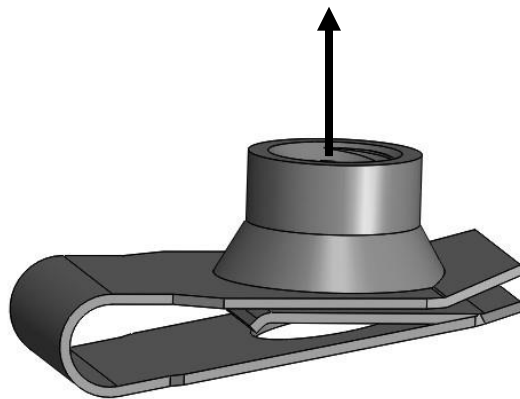
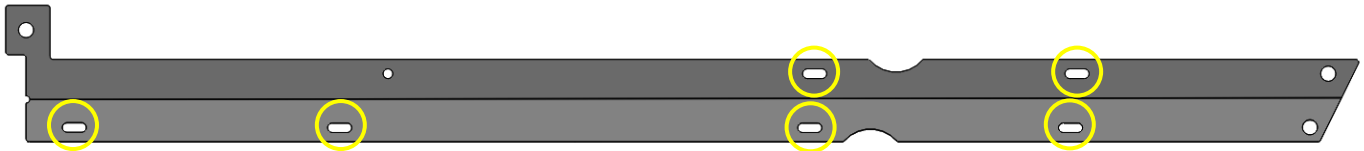
-  Uses OEM Threaded holes
-  Uses Clamps
-  Threads into clip nuts
-  Uses insert washer or nut
-  Self Tapping Screws- may or may not require pre drilling of 1/8" pilot hole.



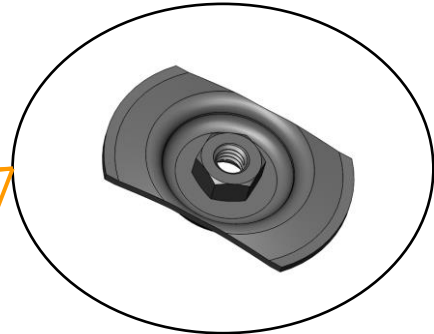
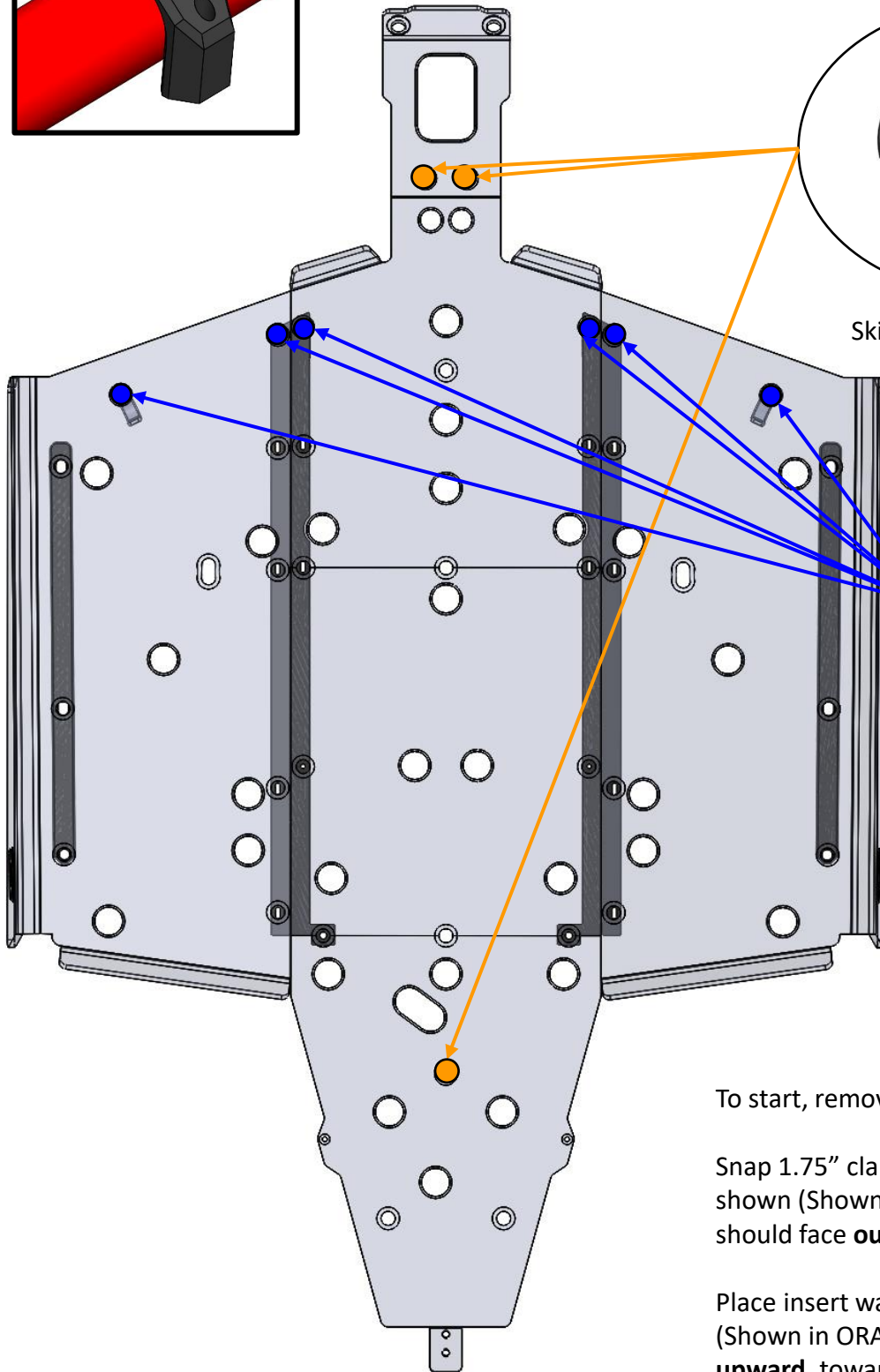
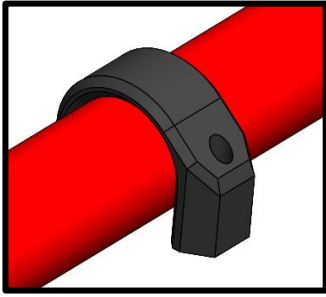
-  Uses OEM Threaded holes
-  Uses Clamps
-  Threads into clip nuts
-  Uses insert washer or nut
-  Self Tapping Screws- may or may not require pre drilling of 1/8" pilot hole.



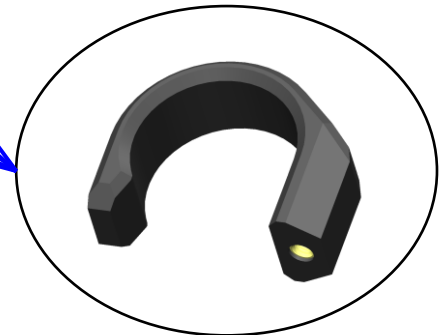
Attach all clip nuts to all slotted holes in metal brackets.



Threading should face upwards, toward vehicle.



Skid Plate Insert Washer

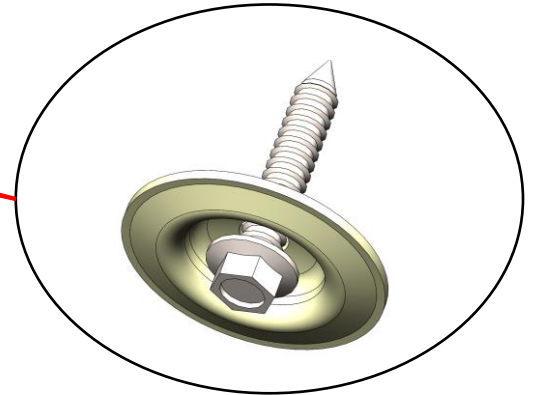
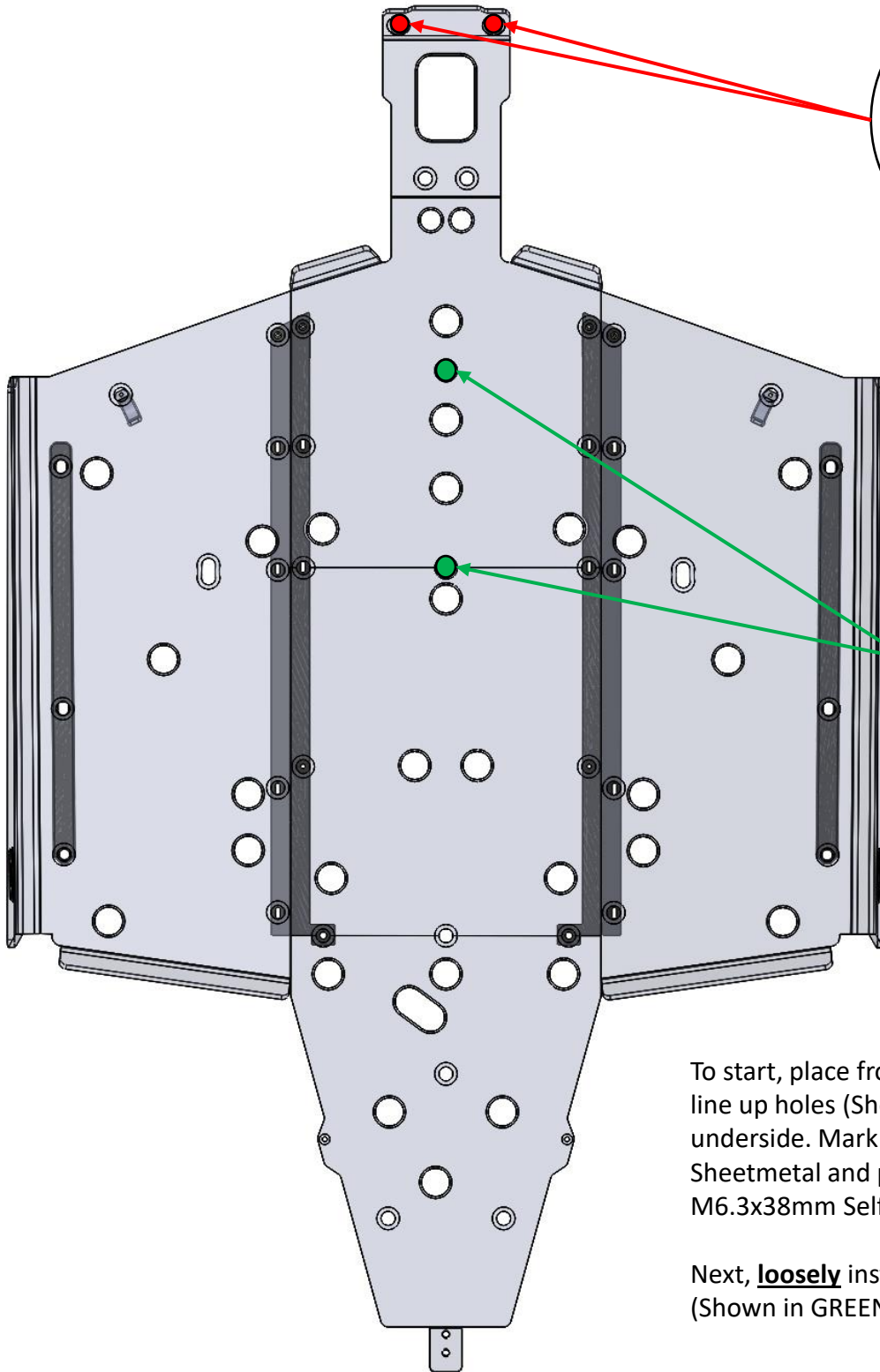


1.75" Wrap Around Clamp

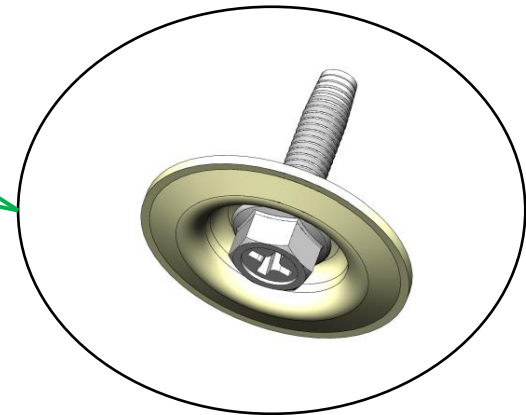
To start, remove stock skid plate.

Snap 1.75" clamp around tubing in general locations shown (Shown in BLUE). The threading on the clamps should face **outward**.

Place insert washers in Sheetmetal holes in vehicle (Shown in ORANGE). Side shown in image faces **upward**, toward vehicle.



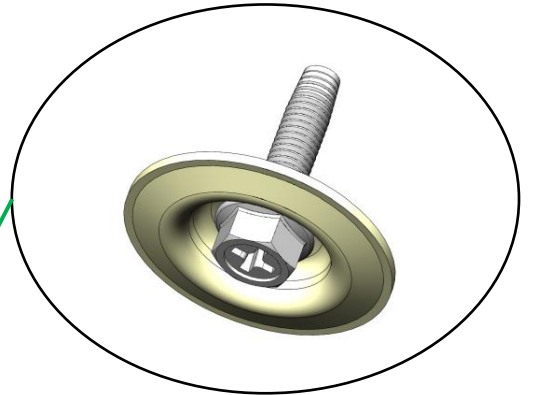
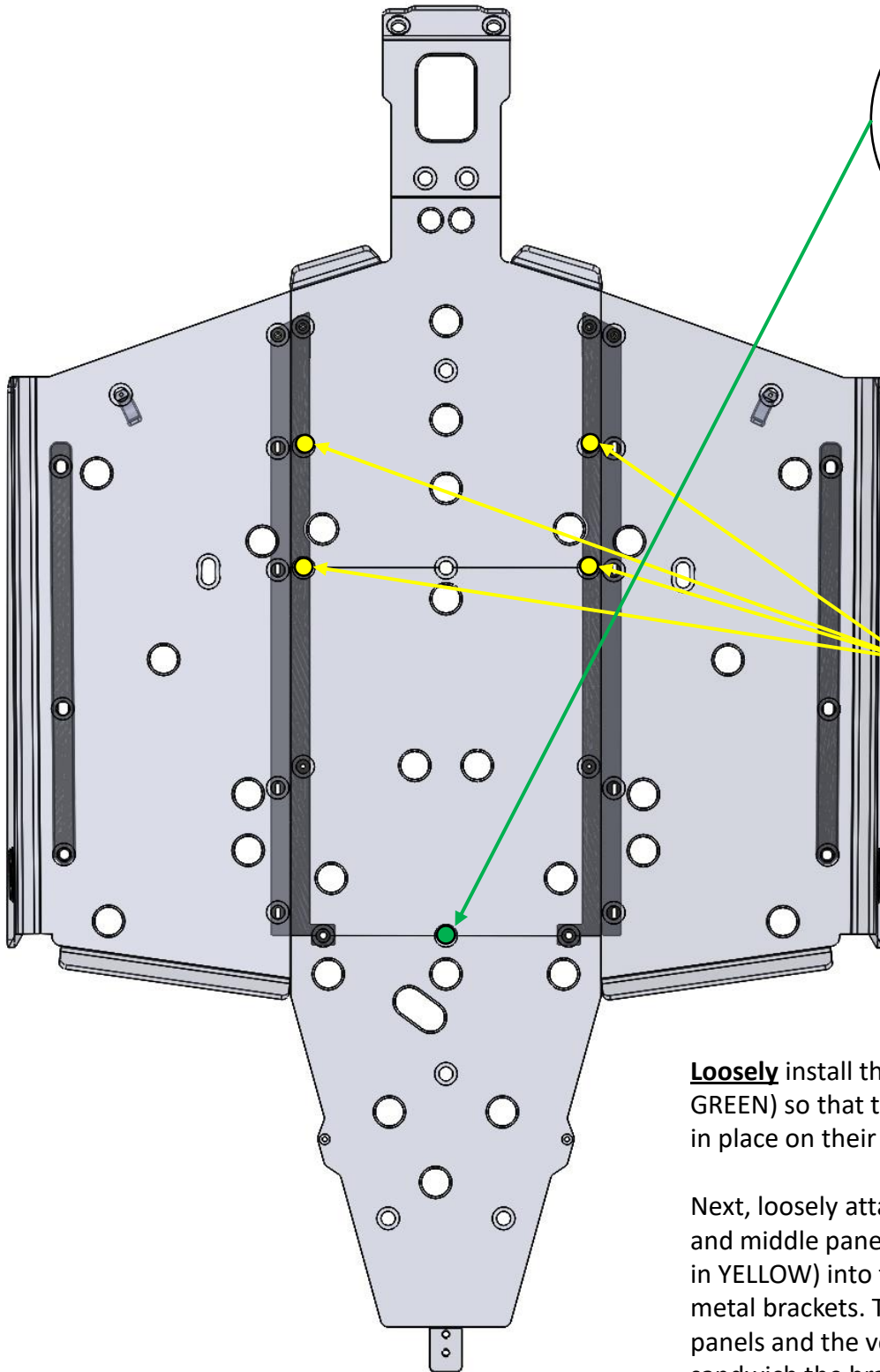
M6.3x38mm Self Tapping Screw



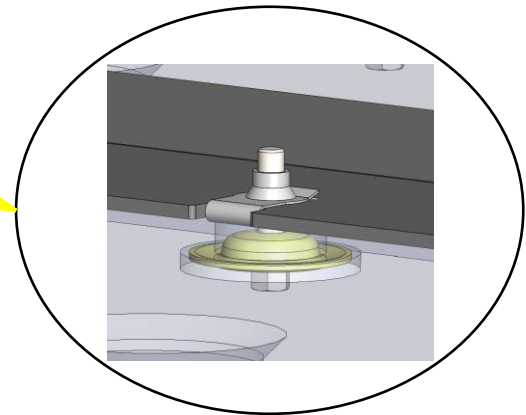
M6x25mm Tapered Bolt

To start, place front panel onto vehicle underside and line up holes (Shown in Green) with holes in vehicle underside. Mark locations (Shown in RED) on vehicle Sheetmetal and pre-drill 1/8th inch holes. Then install M6.3x38mm Self Tapping Screws.

Next, **loosely** install two M6x25mm tapered bolt (Shown in GREEN).



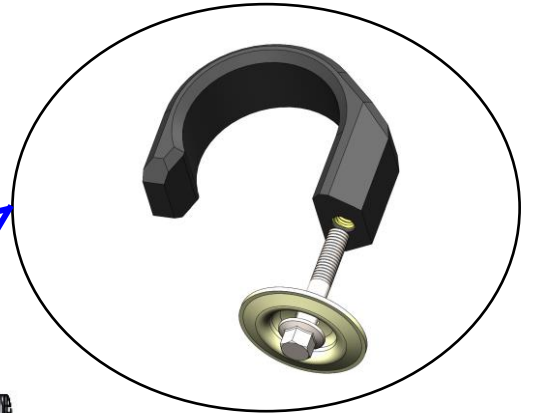
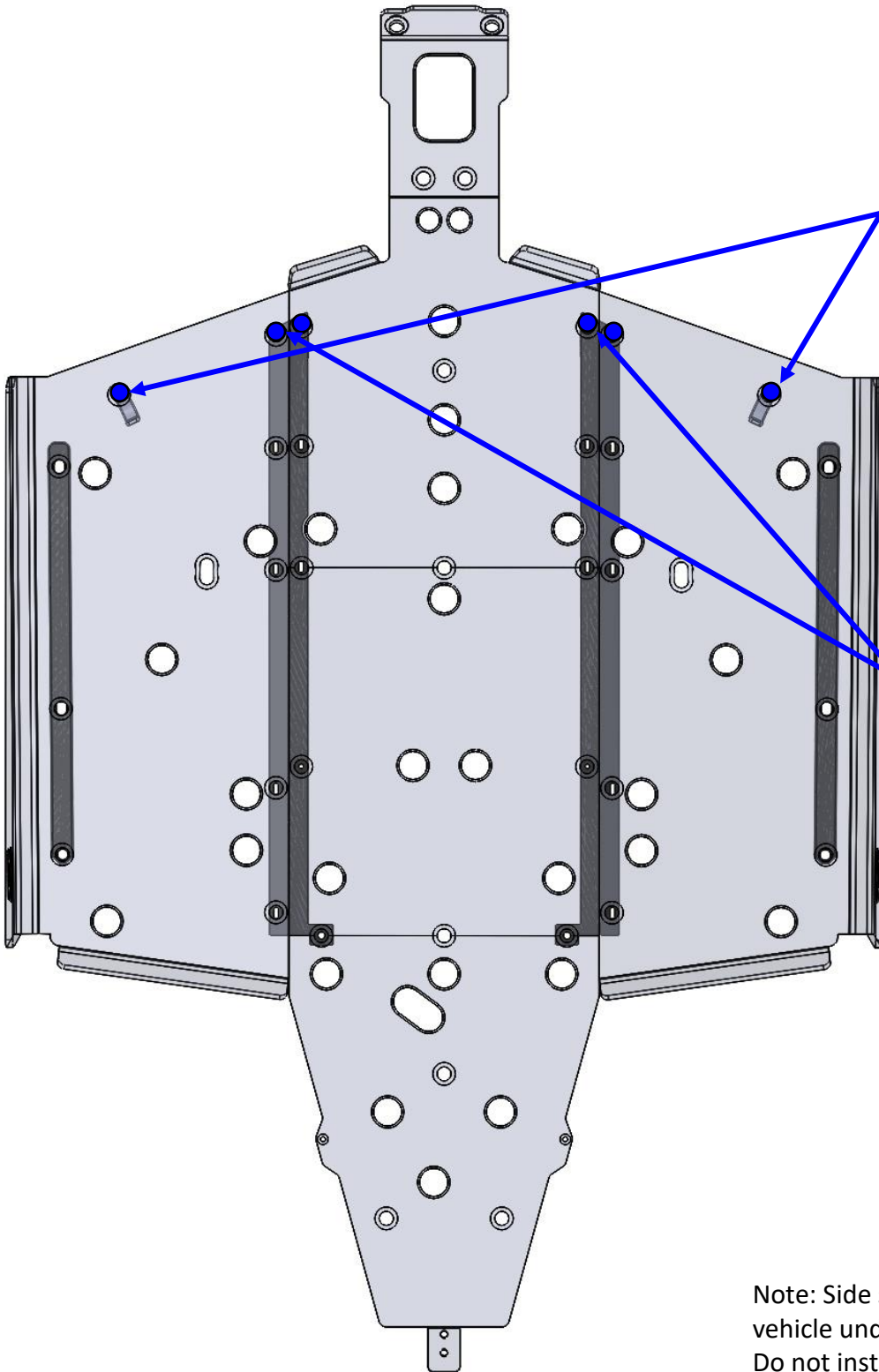
M6x25mm Tapered Bolt



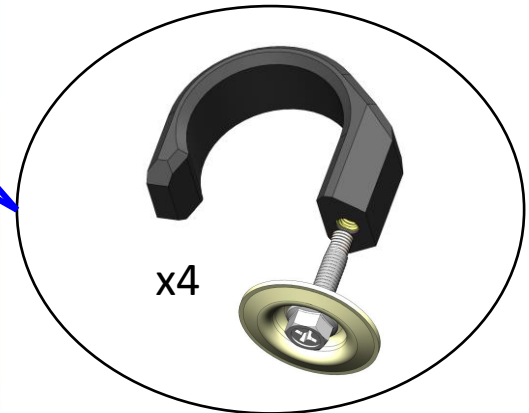
M6x25mm Tapered Bolt through Clip Nut

Loosely install the center bolt and washer (Shown in GREEN) so that the front and middle panels are held in place on their own.

Next, loosely attach the metal brackets to the front and middle panels using 4 bolts and washers (Shown in YELLOW) into the clip nuts that you attached to the metal brackets. The metal brackets go between the panels and the vehicle frame. The panels will sandwich the brackets to the underside of the vehicle frame.

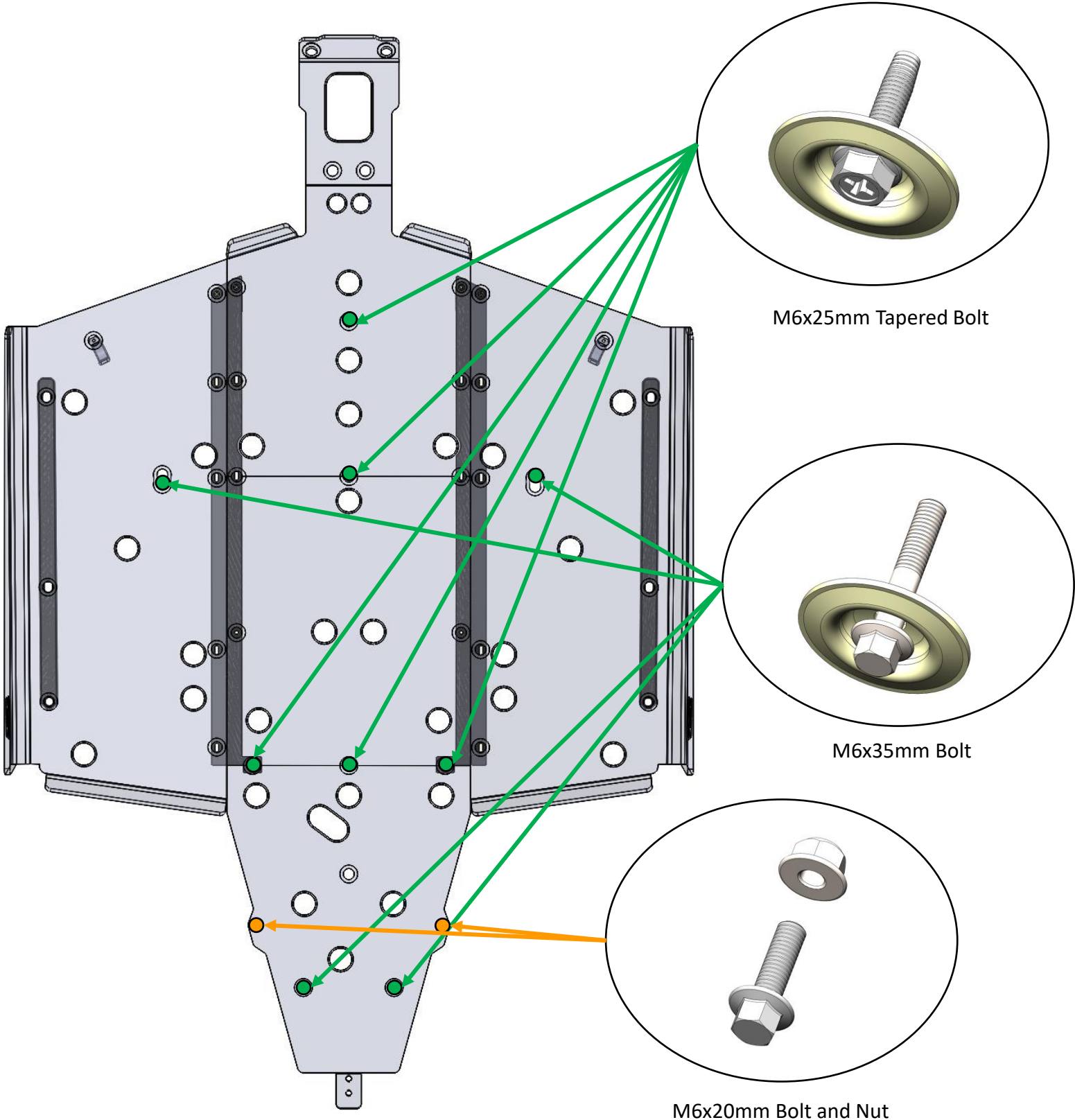


1.75" Wrap Around Clamp
M6x35mm Bolt



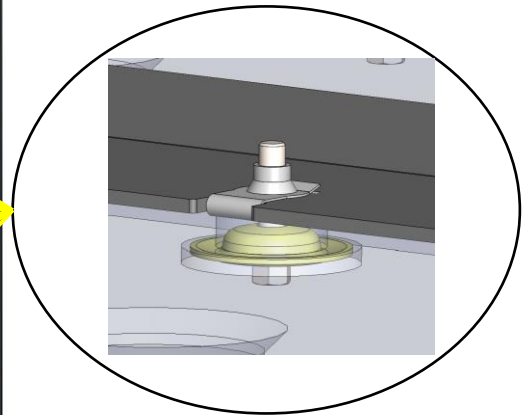
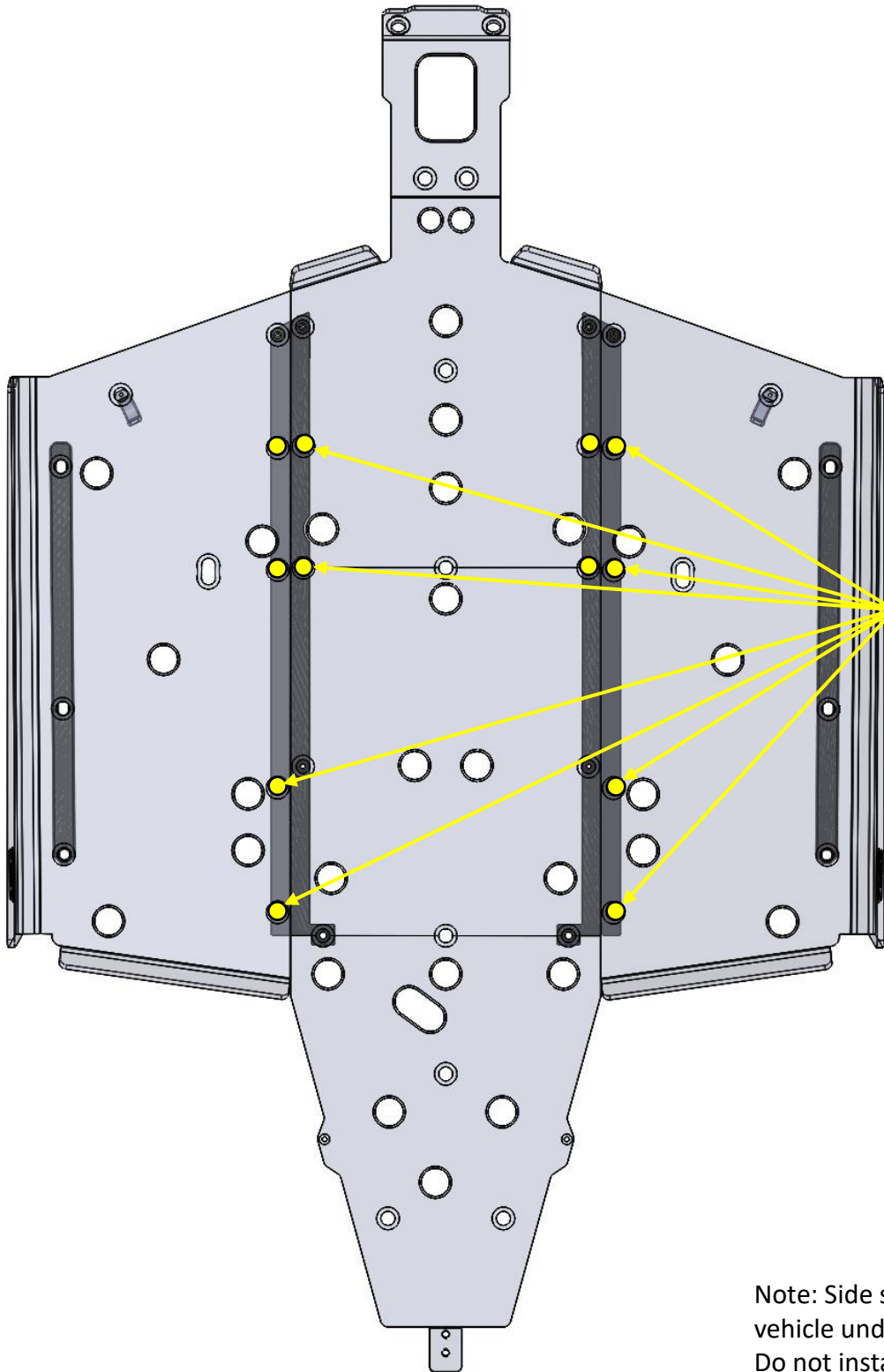
1.75" Wrap Around Clamp
M6x25mm Tapered Bolt

Note: Side spacers go **in between** vehicle underside and side panels. Do not install side panels before placing spacers.



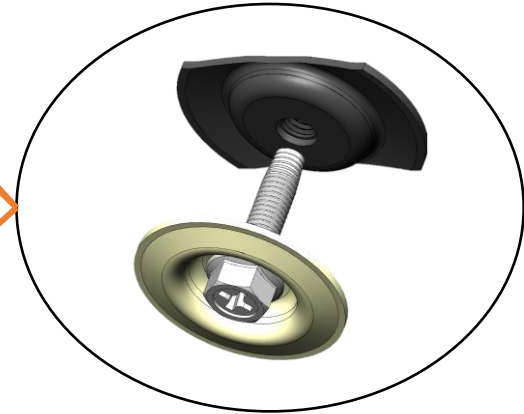
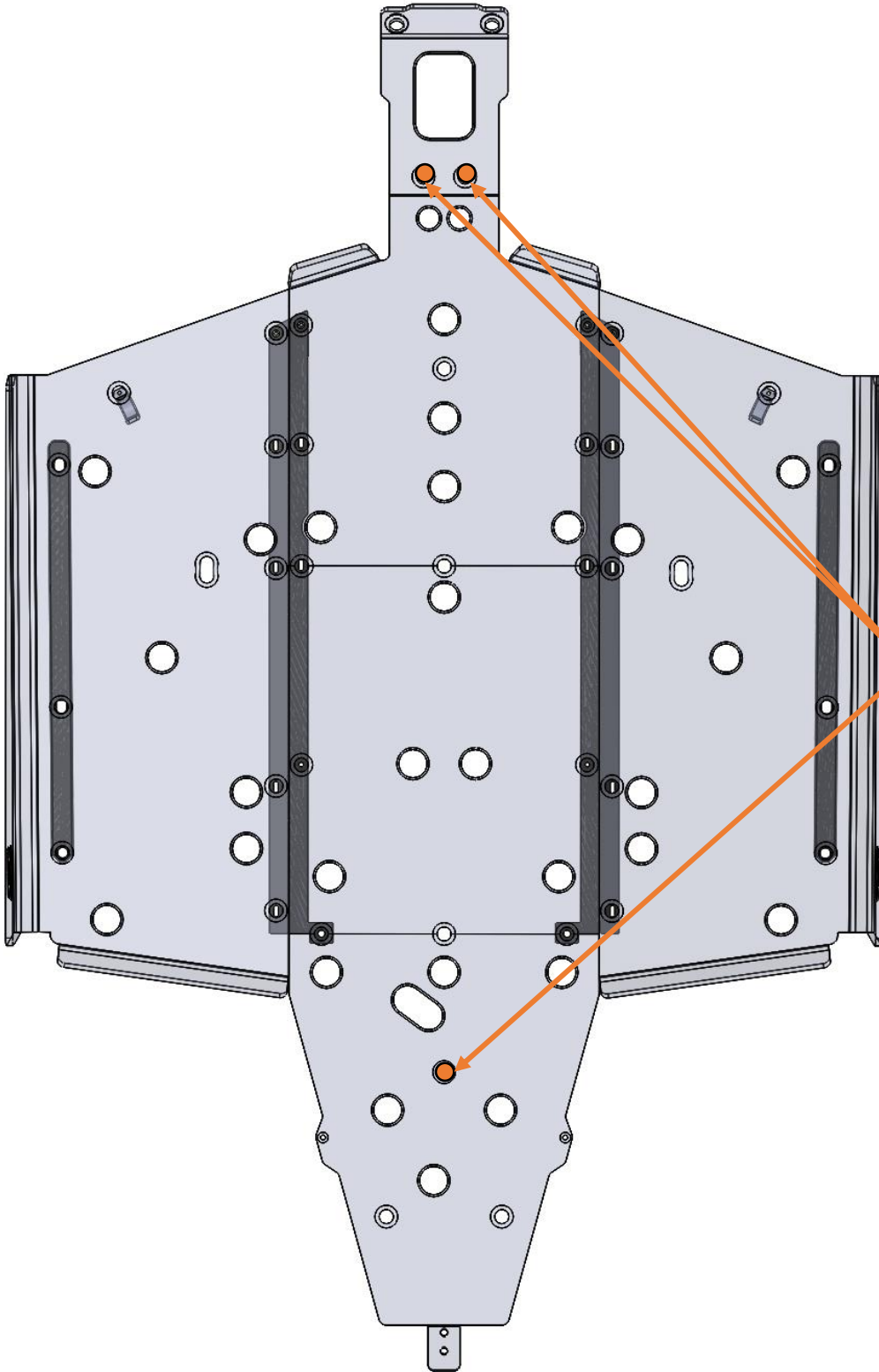
Note: Side spacers go **in between** vehicle underside and side panels. Do not install side panels before placing spacers.

Some model years do not have a bracket here for the bolts. Disregard this mounting location if your vehicle does not have the brackets.



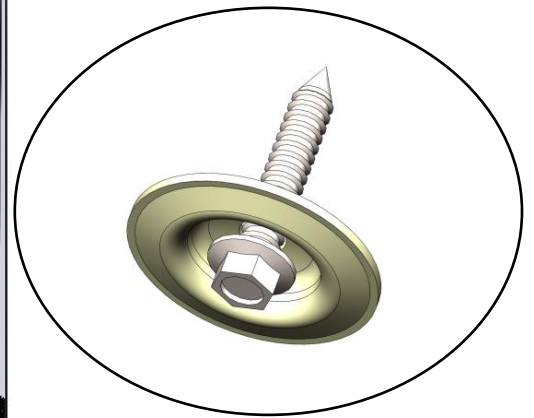
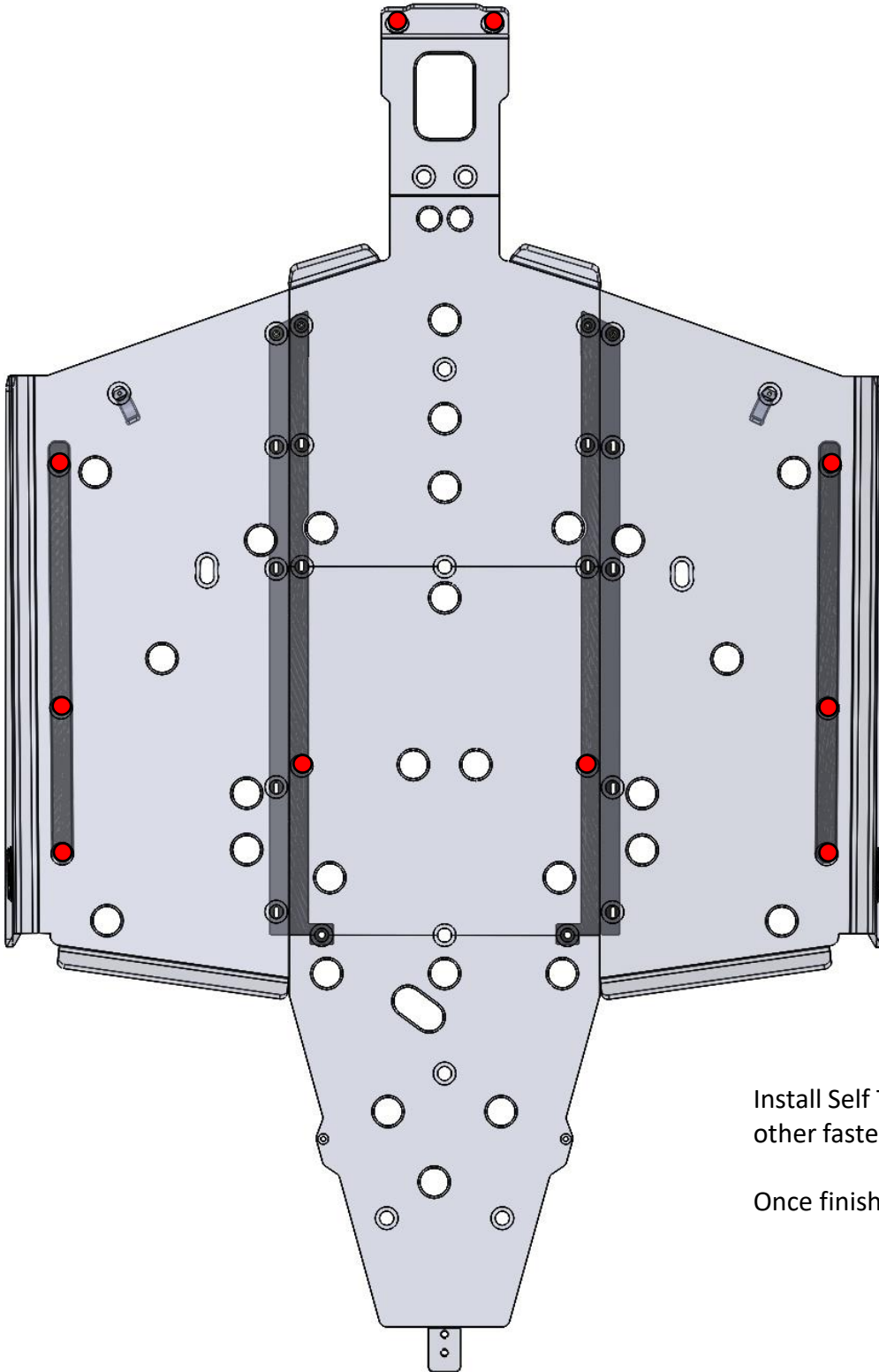
M6x25mm Tapered Bolt

Note: Side spacers go **in between** vehicle underside and side panels. Do not install side panels before placing spacers.



M6x25mm Tapered Bolt

Note: Drilling 1/8" pilot hole first will make installing the self tapping screws much easier.



M6.3x38mm Self Tapping Screw

Install Self Tapping Screws **after** installing all other fasteners unless otherwise stated.

Once finished installing, **tighten all bolts.**

Note: Side spacers go **in between** vehicle underside and side panels. Do not install side panels before placing spacers.