

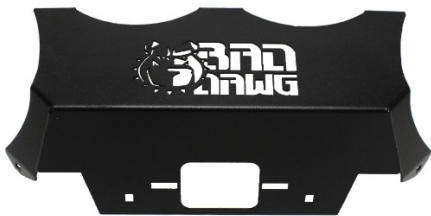
**Package includes:**



Bumper Top Rail



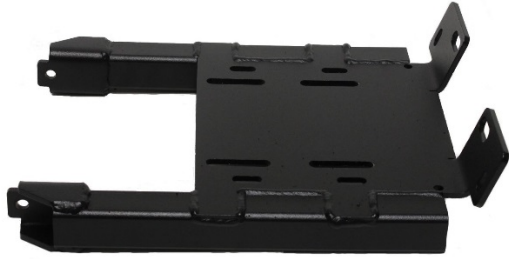
Left and Right Side Rails



Bumper Face



Bumper Skid Plate



Winch Plate



Bottom Bracket



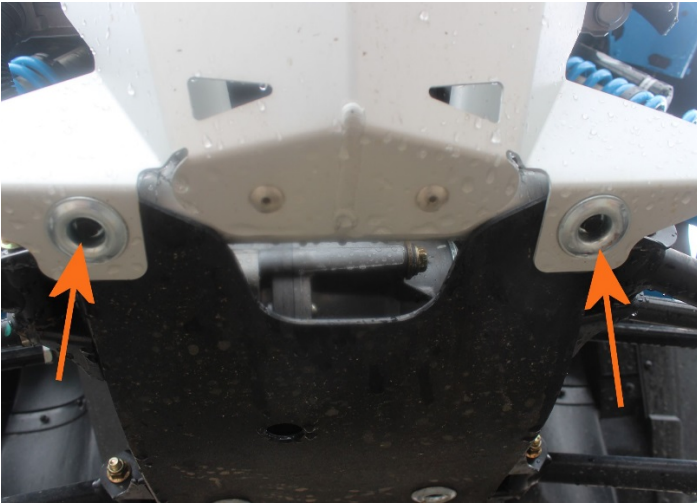
Pre-Packaged Bolt Kit



Factory bolts (from the factory bumper)

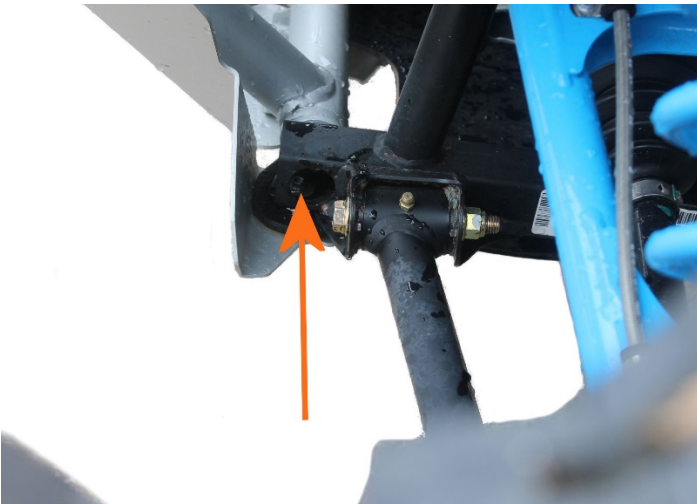
*It is recommended that bolts remain "hand tight" until all bolts are installed.*

**STEP 1**



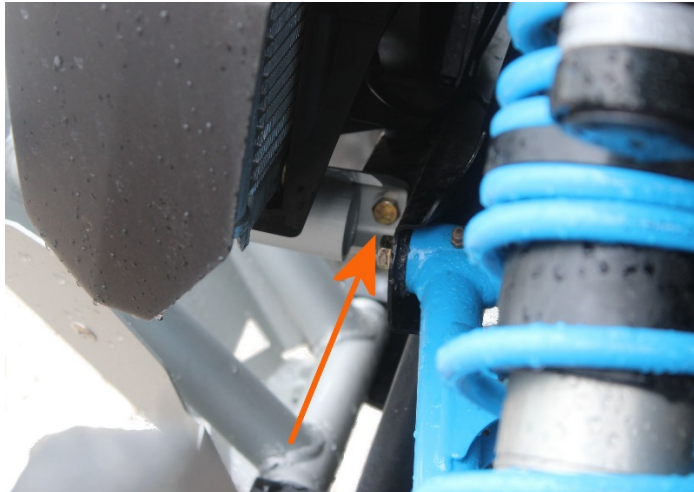
- Remove the Factory Bumper by first removing the two bolts with spacers shown here.
- Retain these bolts for further use.

**STEP 2**



- Remove and retain the longer bolt from the bottom of the bumper.

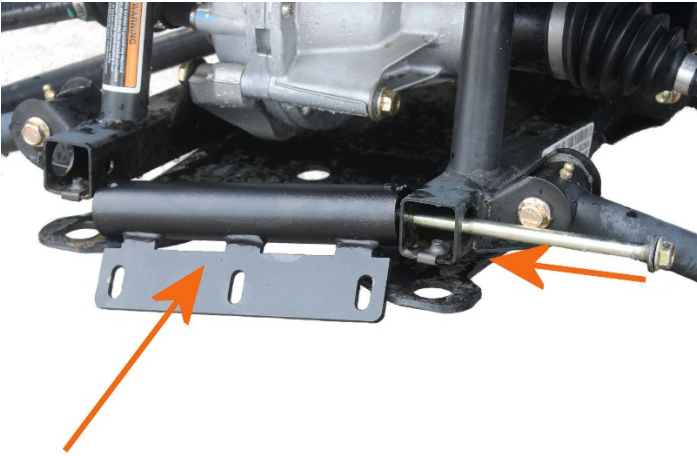
**STEP 3**



- Remove and retain the remaining upper bolts, from both sides of the bumper.

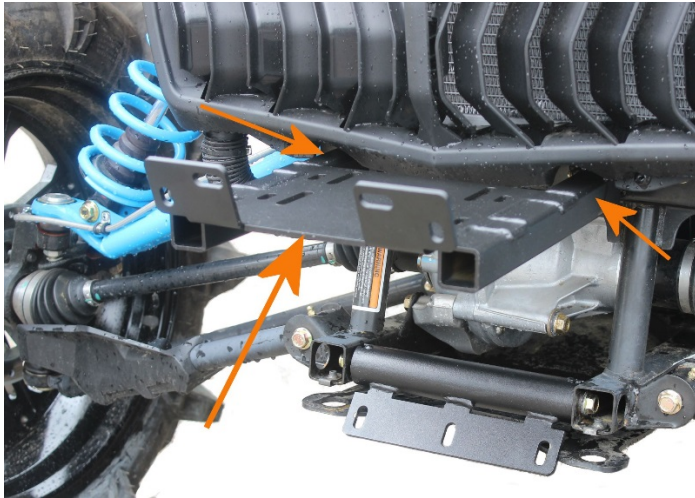
*It is recommended that bolts remain "hand tight" until all bolts are installed.*

**STEP 4**



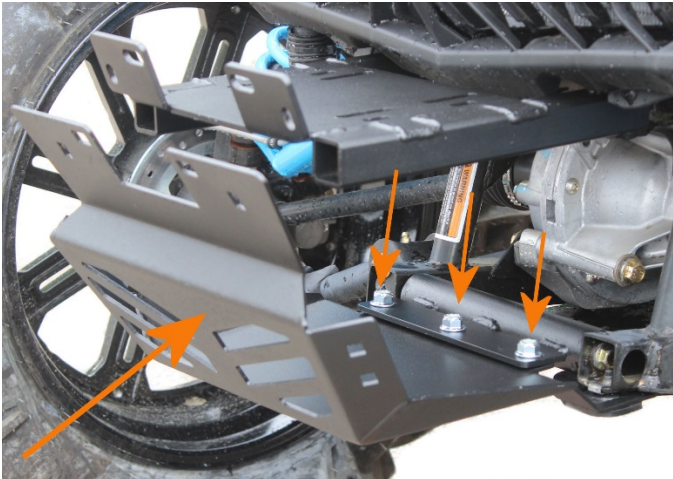
- Install the Bottom Bracket using the longer factory bolt as shown here.

**STEP 5**



- Using the two upper factory bolts, install the Winch Plate.

**STEP 6**

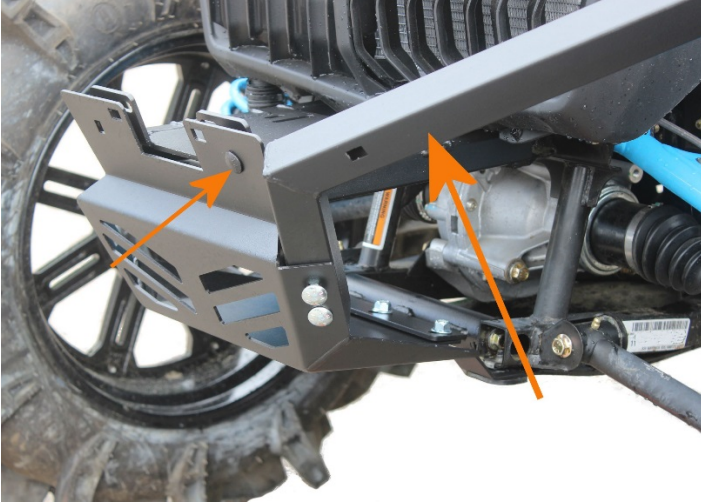


- Install the Bumper Skid Plate using the 3/8 x 1" Hex head bolts and Nylock nuts.



*It is recommended that bolts remain "hand tight" until all bolts are installed.*

**STEP 7**



- Install the Left and Right Side Rails using the provided 3/8 x 2 1/2" carriage bolts with Nylock nuts.
- Place the upper mounting tab between the Skid Plate and the Winch Plate.
- Repeat for the other side.

**STEP 8**



- Install the Bumper Top Rail as shown using the 3/8 x 1" carriage bolts with Nylock nuts.
- Leave loose to help in lining up the Bumper Face in the next step.

**STEP 9**



- Install the Bumper Face by aligning all the corresponding holes indicated here.
- Secure it using the appropriate bolts.

**STEP 10**



- Once all of the bolts are in place, start at the bottom and work your way up tightening all the bolts on the way up.
- Make adjustments to square it up as you move up. It may be necessary to back track a little to adjust .