



780 Professional Drive N. Shreveport, LA 71105 Phone (318)-524-2270 Fax (318)-524-2297

Bennche Big Horn Lift Kit Lift Kit Installation Instructions

Read Before Installation

This product is designed for use on ATVs and/or RUVs to increase ground clearance and fender clearance. It is designed for utility type, slow-speed use on relatively flat terrain in deep mud or snow. Although we have many thousands of satisfied lift kit customers and over 1,800 franchised dealers selling and installing lift kits, purchasers should be aware that use of this product may increase the frequency of required maintenance, part wear, and will raise the center of gravity on your ATV and/or RUV, increasing risk of roll-over, injury and death on all types of terrain. It is your responsibility to always inform other operators and passengers of this vehicle about the added risks.

We recommend that wider tires and/or wheel spacers be used to achieve a wider stance and to improve stability of the ATV and/or RUV. Riders should be advised that the handling characteristics of a taller ATV and/or RUV are different and require extra care when riding, particularly on side hills or off-camber situations. If you further raise the center of gravity by adding taller tires, heavy loads to racks or seats, or by any other means, the ATV and/or RUV must be operated with even more care, at slower speeds and on relatively flat ground. All turns should be done at a slow speed, even on level ground.

Operation of an ATV and/or RUV with or without a lift kit, while or shortly after consuming alcohol or drugs, subjects the rider to the risk of serious bodily harm or possible death. This risk is compounded if the rider does not wear an approved helmet and other safety gear. High Lifter urges that all approved safety gear be worn when riding an ATV and/or RUV as a driver or passenger.

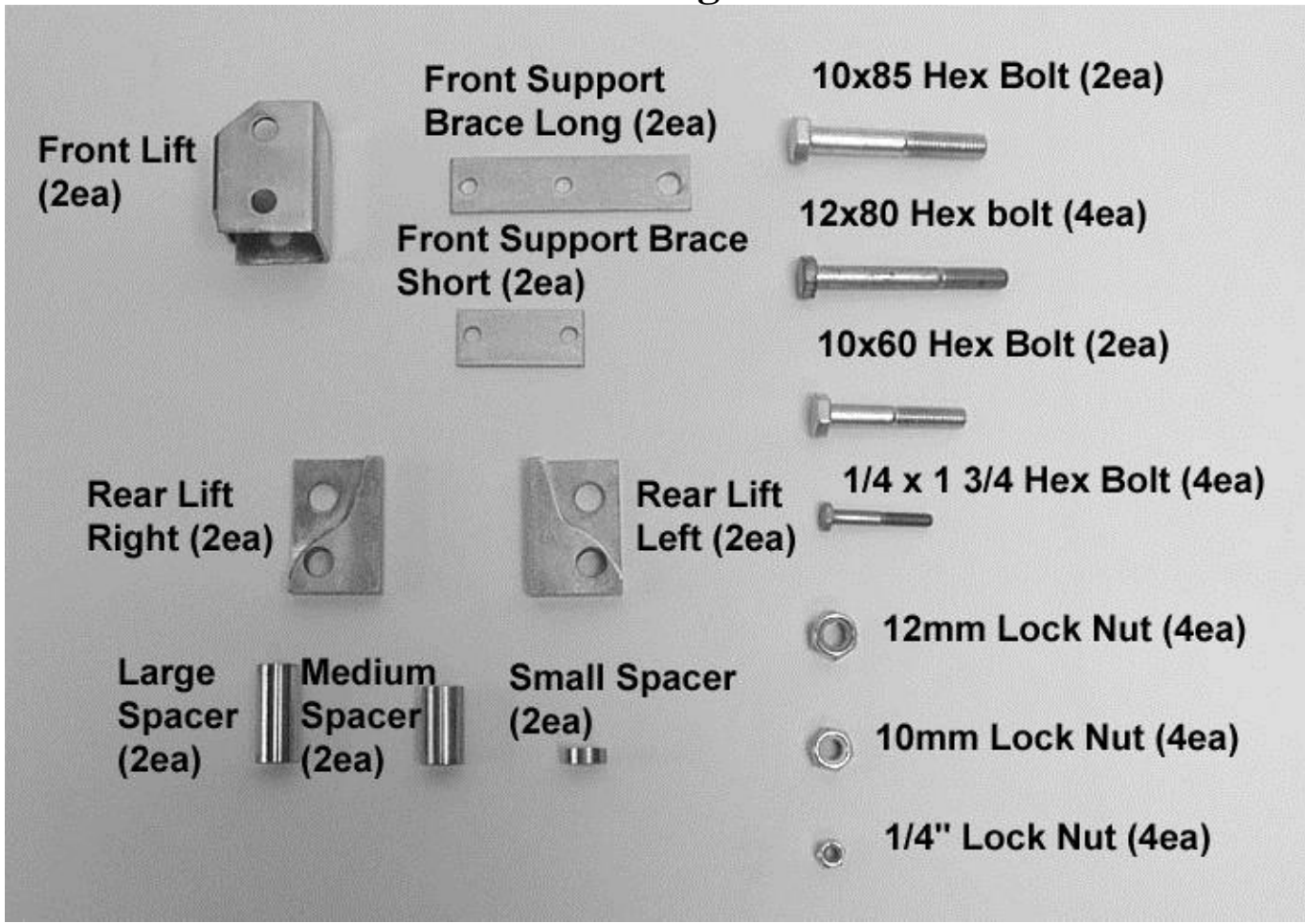
If this product is not what you expected, or is not consistent with your intended use, you should return the product immediately to the seller, before installation, for a refund of the purchase price; less any fees. After installation, product is warranted for 90 days for defects in workmanship and materials. Warranty is limited to refund of the purchase price or replacement of the kit, at the seller's option.

Dealers and other Installers

You are responsible for informing your customer and end user of the information contained above and the increased potential hazards of operating an ATV and/or RUV equipped with a lift kit. If you install the lift kit, it is your responsibility to also install the warning label prominently in view of the driver and in prominent view of the driver and passenger on RUVs and multi-passenger ATVs. They should also be instructed to notify anyone operating the vehicle, as well as any passengers, that a lift kit is installed.

As discussed above, it is critically important that they be instructed in the need for slower speed operation, regardless of terrain, after this lift kit is installed.

Parts Diagram

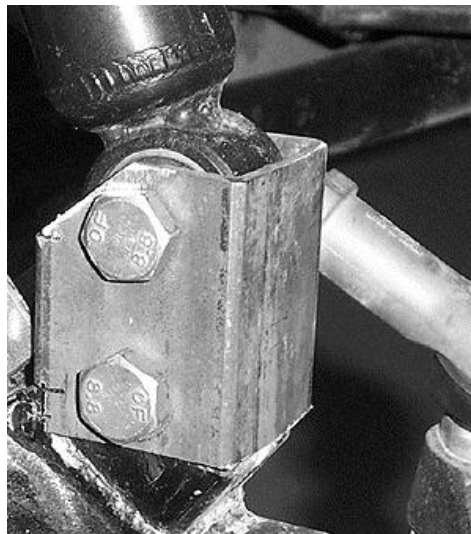
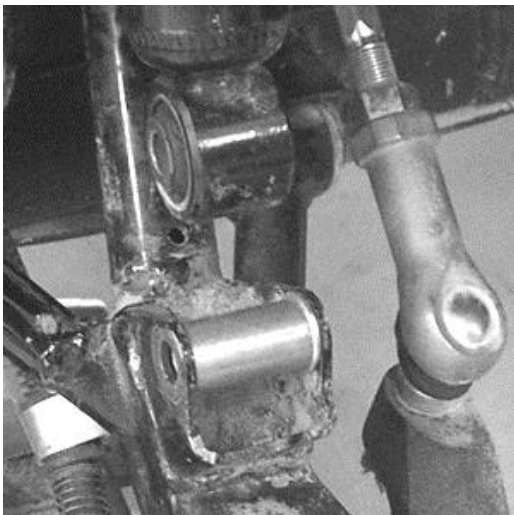


Front Lift

- 1) Place jack under center of ATV front end and lift until front wheels clear the ground. Be careful to support ATV properly so that it is securely supported but so that A-arms and shocks can droop to full extension.
- 2) Remove front wheels and lower portion of shock from the A-arm.

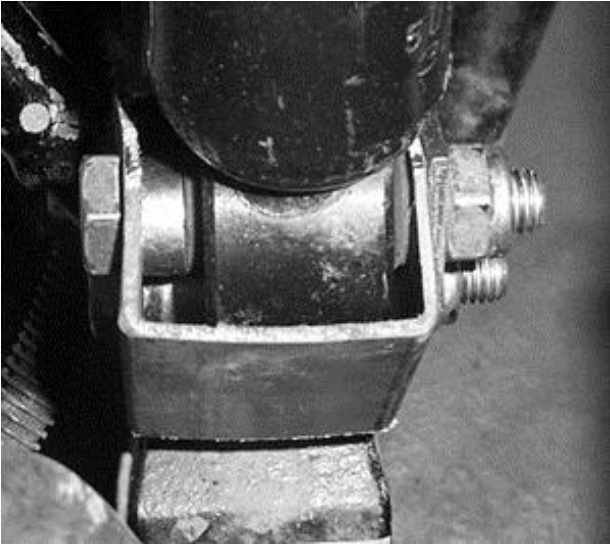


- 3) Slide bottom of lift bracket over A-arm shock mount and insert one medium spacer between the center of the shock mount tabs and bracket.

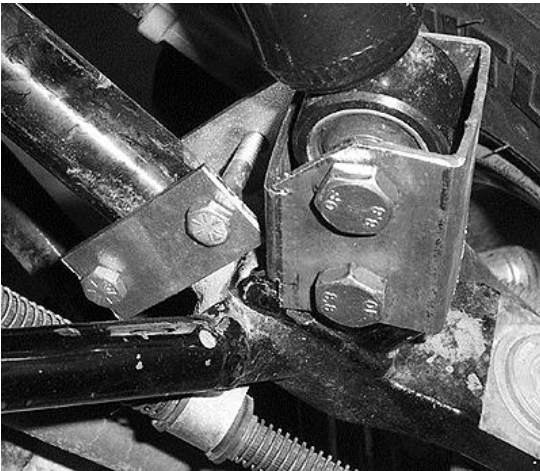


- 4) Now insert the 10 x 60 hex bolt and secure the bracket and spacer to the frame with the 10mm Locknut.

- 5) Slide bottom of the shock into top of the lift bracket. Insert the small spacer between the shock and the bracket. Then insert the 10 x 60 hex bolt, but do not attach the 10mm locking nut yet!



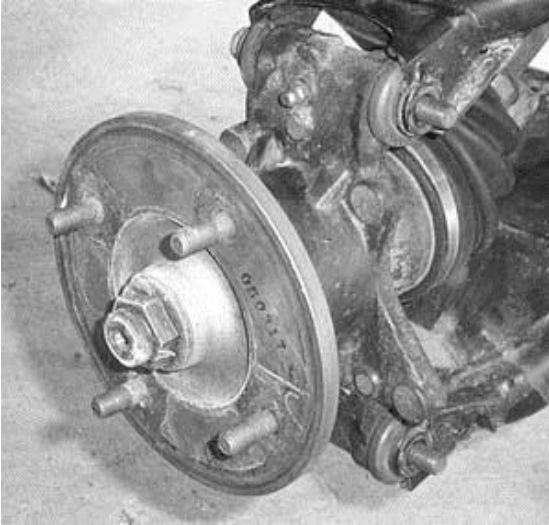
- 6) Secure the lift bracket to the A-arm using one long brace bracket and one short brace bracket. Sandwich the A-arm with the two brackets with the $\frac{1}{4}$ x $1\frac{3}{4}$ hex bolts and $\frac{1}{4}$ " locking nut. Now attach the brace brackets to the top of the lift bracket securing the bracket with the 10mm locking nut.



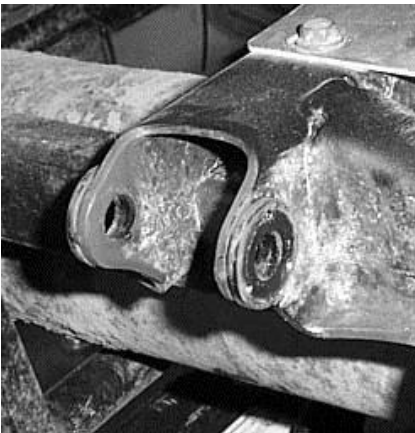
- 7) Repeat the procedure for the other side.
- 8) Make sure all bolts are tightened to manufacturer's torque specifications.
- 9) Install the wheels, torque wheel lug nuts to manufacturer's specifications, lower and remove jack. Check for clearance problems or misalignment.

Rear Lift

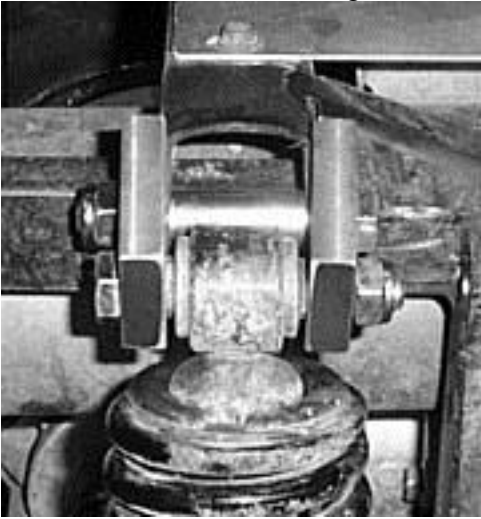
- 1) Place jack under ATV at the rear of the bottom skid plate and lift until the weight is off of the suspension. Be careful to secure the ATV properly so as not to fall off the jack.
- 2) Remove the rear wheels.
- 3) Remove the knuckle assembly.



- 4) Remove the shock from the ATV and secure the rear CV axle out of the way.
- 5) Next, attach the top of the shock to the ATV using brackets provided in the kit.
- 6) Place the large spacer between the shock mount tabs. On the outside of the shock mount attach the rear lift brackets. Loosely secure the spacer and rear lift brackets with the 12 x 80 hex bolt and 12mm lock nut.



- 7) Next attach the top of the shock to the rear lift brackets using another 12 x 80 hex bolt and 12mm lock nut. (Use 1 left and 1 right bracket)



- 8) **Make sure that the brackets run 20 degrees to the shock mount.**



- 9) Tighten all bolts to 45ft lbs of torque. Make sure that they are tight enough so that the brackets do not rotate out of place.
- 10) Repeat steps for opposite side.
- 11) Install the wheels, torque wheel lug nuts to manufacturer's specifications, lower and remove jack. Check for clearance problems or misalignment.